



Putting Children First

Offer day:  
16 April  
2026

# Islington Schools: Inspiring Learning and Achievement

Your guide to the school application process  
for children born between: **1 September 2021**  
and **31 August 2022**

**Closing date: 15 January 2026**

# Location map

## Key

- Primary Schools
- Municipal Offices/Town Hall
- ✈ Rail Stations
- ⊖ Underground Stations
- Parks and open space
- Major roads
- Minor roads
- ++ Rails lines

1. Ambler Primary School and Children's Centre
2. Ashmount Primary School
3. Canonbury Primary School
4. Christ the King Primary School
5. City of London Primary Academy (COLPA-I)
6. Drayton Park Primary School
7. Duncombe Primary School
8. Gillespie Primary School
9. Grafton Primary School
10. Hanover Primary School
11. Hargrave Park School
12. Hugh Myddelton Primary School
13. Hungerford Primary School
14. Laycock Primary School
15. Moreland Primary School and Children's Centre
16. Newington Green Primary School
17. Pakeman Primary School
18. Pooles Park Primary School
19. Prior Weston Primary School and Children's Centre
20. Robert Blair Primary School and Children's Centre
21. Rotherfield Primary School
22. Sacred Heart Catholic Primary School
23. St Andrew's (Barnsbury) CE Primary School
24. St Joan of Arc Catholic Primary School
25. St John Evangelist Primary School
26. St John's Highbury Vale Primary School
27. St John's Upper Holloway CE Primary School
28. St Joseph's Catholic Primary School and Nursery
29. St Luke's CE Primary School
30. St Mark's CE Early Years and Primary School
31. St Mary Magdalene Academy
32. St Mary's Islington CE Primary School
33. St Peter and St Paul Catholic Primary School
34. The New North Academy
35. Thornhill Primary School
36. Tufnell Park Primary School
37. Vittoria Primary School
38. Whitehall Park School
39. William Tyndale Primary School
40. Winton Primary School
41. Yerbury Primary School



---

# Welcome

Choosing the right primary school is one of the most important decisions you'll make for your child – and here in Islington, we're proud to offer a wealth of excellent options.

Supporting children and young people to thrive is at the heart of everything we do. We believe every child deserves a great start in life, and that begins with access to high-quality, inclusive education. Our schools are places where ambition is nurtured, creativity is celebrated, and every child is encouraged to reach their full potential.

Islington's primary schools have a lot to be proud of. As of September 2025, 100% of local schools will be rated good or outstanding by Ofsted. In 2024, our pupils outperformed national averages in every subject at both Key Stage 1 and Key Stage 2, with Islington schools performing in the upper performing quartile when compared with all schools nationally. Children with special educational needs and disabilities attending Islington schools also achieve particularly well. Performance upcomes for children with SEND are also in the upper performing quartile nationally when compared with other local areas, with significantly more Islington children reaching expected standards in reading, writing and maths than their peers nationally.

This success reflects the dedication of our school leaders, teachers and support staff, who work tirelessly to create inspiring, inclusive learning environments. Our Education Plan sets out a bold vision: to ensure every child, whatever their background or starting point, has the opportunity to succeed in a great Islington school.

But education isn't just about exam results – it's about opening doors, sparking passions and building confidence. That's why all our schools offer an outstanding enrichment programme, helping children discover new interests and develop the skills they need for a happy, fulfilling future. This includes:

- 11 by 11 – giving every child access to world-class cultural experiences across London.
- Music Education Islington – our brilliant partnership with Guildhall School of Music and Drama, offering high-quality music education to all.
- World of Work – connecting students with local businesses through career insights, workshops, visits and placements.

This offer shows our commitment to creating a fairer, more equal Islington – and our ambition to make it the most child-friendly borough in London; a place where every young person can grow up safe, supported and inspired.

This guide contains everything you need to choose the right school for your child. If you need help with your application, our friendly School Admissions team is here to support you every step of the way.

Wishing your child every success as they begin their exciting school journey.



**Councillor Michelline Safi-Ngongo**

Executive Member for Children, Young People and Families



---

# Table of contents

<b>Section 1: Before you apply</b>	<b>7</b>
About schools in Islington	8
Dates to remember	10
Top tips before you apply	11
<b>Section 2: How to apply</b>	<b>12</b>
Apply online	13
About school applications	15
Admission criteria for community schools	21
Multiple birth siblings	24
Criteria flowchart	25
Table of school places	26
<b>Section 3: What happens next?</b>	<b>29</b>
What happens to your application?	30
Offer Day	31
Waiting lists and appeals	32
Junior admissions and applying during the school year	34
Fair access protocol	35
<b>Section 4: Islington's Schools</b>	<b>36</b>
Ambler Primary School and Children's Centre	37
Ashmount Primary School	38
Canonbury Primary School	39
Christ the King Primary School	40
City of London Primary Academy Islington	41
Drayton Park Primary School	42
Duncombe Primary School	43
Gillespie Primary School	44
Grafton Primary School	45
Hanover Primary School	46
Hargrave Park School	47
Hugh Myddelton Primary School	487

Hungerford Primary School	49
Laycock Primary School	49
Moreland Primary School and Children's Centre	51
Newington Green Primary School	52
Pakeman Primary School	53
Pooles Park Primary School	54
Prior Weston Primary School and Children's Centre	55
Robert Blair School	56
Rotherfield Primary School	57
Sacred Heart Catholic Primary School	58
St Andrew's (Barnsbury) CE Primary School	59
St Joan of Arc Catholic Primary School	59
St John Evangelist Primary School	61
St John's Highbury Vale Primary School	62
St John's Upper Holloway CE Primary School	63
St Joseph's Catholic Primary School and Nursery	64
St Luke's CE Primary School	65
St Mary Magdalene Academy	67
St Mary's Islington CE Primary School	68
St Peter and St Paul Catholic Primary School	67
The New North Academy	68
Thornhill Primary School	69
Tufnell Park Primary School	72
Vittoria Primary School	73
Whitehall Park School	74
William Tyndale Primary School	75
Winton Primary School	76
Yerbury Primary School	77
<b>Section 5: Useful information and contacts</b>	<b>78</b>
FIS, Bright Start and Free School Meals	77
Additional educational needs	78
Attendance matters: every day counts!	79
Getting to School	80
Glossary	84
Key information	88



# Section 1: Before you apply



## About schools in Islington

The aim of this guide is to help you make an informed decision about which school will best suit your child. If you do need any extra information, please email us with your query at [admissions@islington.gov.uk](mailto:admissions@islington.gov.uk) or call us on 020 7527 5515.

### Top of the class!

Did you know that children in Islington primary schools performed better than the national average in every subject at Key Stages 1 and 2 in 2024? The % of Islington pupils who achieved the expected level was in the top quartile (top 25%) of local authorities in the country for Reading, Writing and Maths - both for the individual subjects and for the combined measure looking at results in all three subjects. In our primary schools, pupils with Special Educational Needs and Disabilities (SEND) achieved particularly well at Key Stage 2 in 2024, with a much higher proportion of pupils with SEND achieving the expected standard in Reading, Writing and Maths (RWM) compared to similar pupils nationally (34% compared to 22%).

For more information on schools in Islington, visit the Department for Education's website: [Get Information About Schools](#).

### When does my child start school?

All children will be offered a full-time school place for the start of the school year in which they turn five. The expectation is that the place is taken up in September at the start of the school year.

### Can I defer or delay my child's start in reception class?

You can opt to defer your child's start in reception class until later in the school year. Your child must however be in full-time education by the time they reach **compulsory school age** (the term after their fifth birthday). If you are thinking of deferring your child's school place, you should discuss this with the head teacher of the offered school before coming to a final decision.

Parents of [summer-born](#) children can opt to delay their child's admission to reception class until the following school year when the child reaches compulsory school age. If you are considering this option, please let the School Admissions team know as soon as possible. You will need to submit a written request asking to delay your child's admission to reception class. You will also need to submit a new admissions application the next year, and your existing application (or school place if already offered) will be withdrawn.



## **An early start to get ahead!**

Whether part time, or full time, early years' education has been shown to provide children with significant advantages in their educational outcomes. 3- and 4-year-olds are entitled to 15 hours funded early education until they start Reception. For more information about free early education, and free childcare from 9 months for working parents, please contact the [Family Information Service](#) on 020 7527 5959.

## Dates to remember

Dates	What Happens
September 2025	You can apply online from <b>1 September 2025 to 15 January 2026</b> .
9 January 2026	<b>Recommended application return date:</b> submit your online application by this date. If you miss the deadline, your application will be late and processed after all on-time applications.
15 January 2026	<b>Application deadline:</b> this is the final date for you to submit your application online. We strongly recommend that you submit your application by <b>9 January 2026</b> .
15 January 2026	<b>Exceptional social/medical application deadline:</b> you must submit your application and supporting documentation by this date for it to be considered alongside all on-time applications.
16 April 2026	<b>Offer day:</b> you will receive your result by email after 5pm. Your child will receive an offer of a place at one school (single offer).
30 April 2026	<b>Acceptance deadline:</b> you must accept (or decline) your school place by this date. You can do this online.
14 May 2026	<b>Second round of offers:</b> declined offers are redistributed to other applicants on the waiting list in strict criteria order. Many applicants will be offered one of their higher preferences. The redistribution of declined offers continues until September.
22 May 2026	<b>Appeal deadline:</b> submit your <a href="#">online appeal</a> for an Islington community school by this date. For other types of schools, please refer to that school's website. Remember, you can still appeal even if you have accepted a place at a different school.
July 2026	<b>Waiting lists for schools outside Islington:</b> Please check whether you need to submit an in-year application to remain on the waiting list of a school outside Islington.
31 December 2026	<b>Islington school waiting lists:</b> Your child's name will automatically be removed from all waiting lists. To add your child to a waiting list after this date, you will need to submit an <a href="#">in-year application</a> .

# Top tips before you apply



## Do

1. Apply on time – only 40% of applicants who applied late were offered one of their preferred schools compared to 97% of on-time applicants.
2. Remember to apply even if your child attends the nursery of your preferred school. **There is no automatic entry to reception from nursery.**
3. If your child's older **sibling** attends your preferred school, **you must still apply.** *Please note that to qualify for admission under the 'sibling' criterion, the older child will still need to be on roll at the school in September.*
4. Visit schools – this is the best way to get a 'feel' for the school. You can meet a member of the leadership team, ask questions and see the school in action.
5. Think about what is right for your child – don't rely on what others tell you - visit the school and experience it first-hand.
6. Talk to your child – involve them as much as you can.
7. Think about the journey – how easy will it be to get to the school? A local school means your child can walk from home, benefitting their health and the environment.
8. Check the admission criteria and cut-off distance – how likely is it that your child will be offered a place? You can check by clicking on the link in the school fact file.
9. **Use all six preferences** – make sure you include at least one local school.
10. Ask the School Admissions team for advice – they can't tell you which schools to apply for, but they can explain the admission criteria and check whether you would have been offered a place the previous year.
11. Make sure you press '**submit**' when you finish your online application. You should then receive a reference number confirming safe receipt.



## Don't

1. List private schools on your application – you should apply directly to fee-paying schools.
2. Wait until the last minute to apply – you may have a problem getting online or logging on. Give yourself plenty of time to think things through carefully.
3. List only one school – your application will not be treated more favourably, and you could lose out on another school you like.

## Section 2: How to apply



# Apply online

If you live in Islington, you need to apply using [Islington's online application form](#).

## When can I apply?

You can apply from **1 September 2025** until Thursday **15 January 2026**. Applications made by the deadline are 'on-time' and will be processed before 'late' applications made after this deadline.

We strongly recommend that you submit your application by Friday **9 January 2026** in case there are any issues with submitting your application (e.g., problems with internet access, forgotten username or password etc.).

## Why apply online?

1. You can do your application in stages. You can review the order of schools listed, and other information as many times as you want before you submit your online application.
2. The online system checks for errors or missing information.
3. The system is secure, and your information is safe.
4. A reference number is sent to your registered email confirming safe receipt of your application.
5. There is no need to pay for postage.

## How do I get started?

You will need an email address. You can register for a free email account with a number of providers. For instructions about how to create an email address, watch this handy [YouTube](#) tutorial.

## I have an email address, what next?

Register your email address on the [London e-Admissions portal](#). Once you have done this, you will receive an email explaining how to make your application.

## When do I find out which school has been offered?

National Primary Offer Day is **16 April 2026**. In the evening:

- you will receive an email telling you which school has been offered

OR

- you can log on to the London e-Admissions system to view your offer online.



## Who can help me with the online application?

The School Admissions team can offer telephone advice and talk you through the online application.

The team can also offer one-to-one support from 222 Upper Street. Please call **020 7527 5515** to arrange an appointment.

For technical queries and assistance, please contact the London e-Admissions helpdesk:

**E:** [www.eadmissions.org.uk/support/](http://www.eadmissions.org.uk/support/)

**T:** 020 8255 5555 (Option 1)

### ParentComms

Why not sign up for ParentComms? Using the app, you will be able to receive the outcome of your application on your mobile device. You can download the free ParentComms app from the [Apple AppStore](#), [Google Play](#) or [Windows Phone Store](#) by registering your username and password. You will receive reminders about the closing date and any pending applications that need to be submitted by the deadline.

### Make a note!

Please make a note of the following details as you will need this information to access your application, and offer in April:

Application Reference Number: \_\_\_\_\_

Username: \_\_\_\_\_

Password: \_\_\_\_\_

**Don't forget –  
apply online by 15  
January 2026**

# About school applications

## What you need to know

### 1. How do I apply?

You **must** apply to the local authority where your child lives. Click on this link to apply: [London E-admissions application form](#).

### 2. Do I need to apply if my child is already attending the nursery class of the school where I would like them to stay on?

Yes, you **must** apply even if your child attends the nursery class as there is no guarantee they will get a place in the school's reception class. **If you don't apply, your child may be left without a school place.**

### 3. Do I need to apply if my child has an older sibling at the school already?

Yes, you **must** apply even if your child's older sibling attends your preferred school. Please note that to qualify for admission under the 'sibling' criterion, the older child will still need to be on roll at the school when your younger child is due to start reception class in September. **If you don't apply, your child may be left without a school place.**

### 4. How many schools can I pick?

You can list up to **six schools**. These schools can be in Islington or in another local authority. Please note that although you can list up to six schools, you will receive only **one** offer.

### 5. Have I got more chance of getting the school I want if I only list that school?

There is no advantage in listing only one or two schools. In fact, we highly recommend that you pick six schools and include a local school.

### 6. Is my first preference given higher priority?

Each of your schools is considered separately, without the preference position being considered. This process is known as the '[Equal Preference](#)' scheme.

This means that first and sixth preferences are processed in the same way.

Your child will **not** get higher admission priority if you list a school as a first preference, and your preference order is **never** disclosed to schools.

## 7. So, why ask me to list schools in the order I prefer?

Preference order only comes into play **if** your child qualifies for admission to more than one of your preferred schools.

For example, if your child lives within the '[cut-off](#)' distance for two or more schools, the application system (**Pan-London Register or PLR**) automatically offers the highest preference possible.

So, if your child is eligible for a place at both your first and fifth preference schools, the system will select the highest preference possible, which in this case is your first preference school. This is why you should list schools in the order you most prefer, with your favourite school first as you will only receive one school offer.

## 8. So why not offer my child more than one school if this happens?

Only **one** offer can be made to each child. This is to make sure that every child receives an offer of a school place on Offer Day. It wouldn't be fair for some children to receive two or three offers while others get none.

## 9. What happens to my other preferences?

All lower preferences are put back into the system so they can be offered out to other children.

So, if your child receives an offer at your third preference school, lower preferences are put back into the system and your child is automatically placed on the waiting lists of all your higher preference schools.

This means that if a place becomes available at your first preference school, we will contact you to make that offer.

## 10. How do you decide who gets a place at which school?

Every school must say how places will be allocated if there are more applications than places available. This is done by applying rules – referred to as [admission criteria](#) or **oversubscription criteria**.

## 11. How do I know what the admission criteria are?

Every school must publish this information on their website. It's really important that you read and understand the [admission criteria](#) so you can make informed decisions about which schools to apply for.

All schools use distance as a way of prioritising applicants. However, other applicants are given higher priority as some schools prioritise siblings or children of a particular faith. If you need help with understanding the [admission criteria](#), the School Admissions team can help.

## 11. Can I get advice on which schools I should choose?

We can't give advice on which schools to pick as this is a personal matter, but we do advise you to:

- Visit the schools you are interested in so you can meet the staff, ask questions and, get a 'feel' for the school.
- List at least one of your nearest schools as a preference. Although there is no guarantee of a place at a local school, it is true to say that your child is more likely to get a place there as the majority of applicants are admitted under the '[distance criterion](#)', which gives priority to children living closest to the school.

## 12. What happens if it isn't possible to offer a place at one of my preferred schools?

We will reserve a place at your child's nearest Islington school with a vacancy and provide you with a list of all schools in the borough that still have places. You can accept the school offered or choose an alternative.

Your child will also remain on the waiting lists of all your preferred schools and if a place becomes available, we will contact you to make the offer. We will also make a second round of offers a few weeks after the acceptance/decline deadline so you may get a preferred school after all. **Don't risk being left without a school place.**

## 13. Can I list private schools on the form?

No. You need to apply for a place directly with fee-paying schools using their application form.

## 14. What about faith schools?

Yes, you can list these on the application form but you need to check whether you need to provide additional information on their [Supplementary Information Form \(SIF\)](#). For Islington faith schools, you can check this in the school's fact file in section four of this guide.

## 15. When do I need to make a final decision?

You must submit your online application by **15 January 2026** for it to be on-time. By applying online, you can change the order of your preferences right up until the deadline.

Remember to press **submit** when you have made your final decision. Make sure you apply by midnight on **15 January 2026**.

**If your application is late the chances of getting a place at one of your preferred schools is likely to be reduced.**

## 16. I am finding this stressful. Who can help me?

We understand that this is a difficult time for you, with lots of different things to consider. The School Admissions team is on hand to help. Do contact us and we will do our very best to assist you.

T. 020 7527 5515

E. [admissions@islington.gov.uk](mailto:admissions@islington.gov.uk)

## Application address

The address that we will use to process your application will be your child's permanent address on **15 January 2026**. We can only use one address. This must be the official address where your child spends most of their time Monday to Friday. We are unable to use a future or intended address for the purpose of school admissions.

For families residing permanently on boats, the address used for application processing will be the vessel's established long-term or permanent mooring point. In cases where families do not have a fixed mooring location, the vessel's position as of **15 January 2026** will serve as the address for application purposes. This information may be verified through a site visit conducted by the School Admissions team.

**Please note that we may not accept a temporary address if you still possess a property that was previously used as a home address; nor accept a temporary address if it is used solely or mainly to obtain a school place.**

We may also carry out additional checks with the new school to see whether the child's home address has changed since the application was completed and will investigate all applications where:

- there are any doubts about the information originally provided
- information has been received from a member of the public to suggest misleading information has been provided and a fraudulent application made
- the council tax account is in a different name to the applicant.

**We have a duty to protect public funds and may use the information you provide on your application form to prevent and detect fraud. The provision of false or misleading information will result in the school place being withdrawn and may lead to prosecution.**

## Whistleblowing

Islington Council takes a firm stand against any attempt to obtain a school place by fraud. If you provide false or deliberately misleading information whilst completing a school admissions application or use a temporary address intentionally for the purpose of gaining an advantage over other applicants, your application will become void.



If you know someone who intends to use, or has used, a false address to obtain a school place, you can report this confidentially to the Islington School Admissions team on 020 7527 5515 or email [admissions@islington.gov.uk](mailto:admissions@islington.gov.uk).

## **Shared parental responsibility**

If parents live separately, but the child lives equally with both, then it is the parents' responsibility to make this clear at the time of the application and to provide supporting evidence in respect of both addresses, for example, a Residency Order from a court.

**Please note that only one address can be used for school admission purposes and the final decision will rest with the Islington School Admissions team.**

## **Proof of address**

Please provide your **council tax reference number** (you can find this on your council tax bill) so we can verify your address. If you can't provide this, please provide a copy of your most recent rent, mortgage statement or tenancy agreement.

If you can't obtain these documents, please provide at least two alternative documents. For example: utility bill; bank statement; GP, hospital, dentist or optician letter.

**We also require proof that the child you are applying for lives with you.** Therefore, please provide a copy of your most recent child benefit or family tax credit letter which clearly states your child's name and address.

If you don't receive child benefit or family tax credit, please provide at least two alternative documents to prove your child lives with you. For example: a letter from your child's GP, dentist, hospital, optician; or the page within your child's health record book that has his/her name and address.

Please ensure that copies of documents provided are not older than 12 months and that any financial information is covered over or erased. Documents can be uploaded with your online admissions application. Should we require further information, we will contact you directly.

**Don't delay in submitting your application if you don't have the appropriate proofs of address as we can offer advice on what to do next.**

## **Change of address**

If your child moves after **15 January 2026**, then please provide a copy of the documents listed above. This is to ensure your application is handled correctly.

## **Children of UK service personnel or crown servants**

If you, or your partner, are a serving member of UK forces with a confirmed posting to Islington, or a crown servant returning from overseas, we will use the posting address

provided by your employer if you provide us with documentary supporting evidence of your relocation date and Islington address.

There is no guarantee that a place will be available at your preferred school; each application will be considered in line with the school's [admission criteria](#). If an offer can be made, then that place may be held for a reasonable period, depending on individual circumstances.

If we can't offer your child a place at your preferred school, then we will in advance of your return, allocate the nearest Islington school to your home address that has a place available. Where your child is first on the waiting list, we will ask the school to go over number and admit your child as an 'excepted' pupil in line with provisions in the School Admissions Code.

### Late applications

If we receive your application after **15 January 2026** then your application will be late. This means it will not be considered until we have allocated school places for all on-time applications. This could reduce your chances of getting a place at the school you want.

If there are exceptional reasons why it was not possible to make your application by the deadline, please email us at [admissions@islington.gov.uk](mailto:admissions@islington.gov.uk) providing any supporting documentation.

### Privacy Notice

London Borough of Islington will handle the information you have provided in line with the provisions of the General Data Protection Regulation (GDPR) 2018. Any personal information will be held in confidence with only the necessary people able to see or use it. For more information about how we process personal data about you or your child, please refer to our [Privacy Notice](#).

# Admission criteria for community schools

## Children with an Education, Health and Care Plan (EHCP)

If your child has an EHCP, they will be admitted to the school named in the EHCP. Please contact your SEND Keyworker for further information.

## Oversubscription criteria

When more applications are received than there are places available, the following criteria will be used to decide which pupils are offered a place at an Islington community school in the order listed below:

### 1. [Children looked after / Previously looked after](#)

This refers to children who are in the care of a local authority and children who have been adopted (or made subject to a Child Arrangements Order or Special Guardianship Order) *immediately after being looked after*, including those who appear to have been in state care outside of England. **Please refer to the [Glossary](#) in Section 5 for full details.**

### 2. [Siblings](#)

A sibling is defined as a brother or sister, half-brother or sister, stepbrother or sister or adopted brother or sister, whose main residence is at the same address. This criterion will apply to applicants with a sibling living at the same address who is on the roll of the preferred school (reception class to year 6), or co-located Special School, at the time of the proposed admission in the new academic year.

### 3. **Exceptional social/medical needs**

The Director of Children's Services, on an individual basis, may give priority to applicants who can demonstrate that admission to a particular school is necessary on the grounds of professionally supported **exceptional** medical, social or special educational needs. Parents must supply details of any such special factors at the time of the original application (together with recent supporting documentation), to enable these factors to be considered.

If your child has an exceptional social (for example child protection/safeguarding issues) or medical need (for example if your child requires wheelchair access) to attend a specific Islington community school, then please provide professional evidence (e.g. from a doctor or educational psychologist) and complete our [social/medical application form](#) explaining why this is the only school that can meet your child's needs. Please return the form by **15 January 2026**.

Your case will be considered by a panel comprising senior admissions officers and SEND specialists. The panel will consider the evidence presented and consult relevant professionals as necessary to determine:

- a. whether your child has an exceptional social or medical need and
- b. whether this need can only be met at a specific school.

**Please note late applicants applying under social/medical criterion can be prioritised only on the waiting list.**

#### 4. Distance

Applicants will be prioritised by distance (starting with the nearest). Nearness to schools is measured on a computerised mapping system using a straight-line distance measurement. Routes will be calculated from the home address (as defined by the Land and Property Gazetteer) to the midpoint of the school grounds (as determined by the London Borough of Islington).

#### Tie breaker

Distance will be used as a tiebreaker for criteria 1, 2 and 3. If only one place is available and two or more children live an equal distance from the school, the child who will be offered the place will be determined by random allocation using a computerised system.

#### How we calculate home to school distances

We use the Capita ONE system to calculate the distance from your child's home (the start point) to the school (the end point). This system calculates the distance in miles to three decimal places. The routing database system uses two dimensional maps. This means it does not take into account any contours or terrains.

#### The start point (applicant's home)

For calculation purposes, Islington Council uses the National Land and Property Gazetteer (NLPG) database to determine the start point for Islington addresses. The starting points for other addresses are provided by your home local authority. Calculations are based on the assumption that the child's home address is classified at the point of application as a residential property.

If you live in a block of flats where you use a communal entrance, we will use the NLPG point for the block and not the centroid of your individual flat for the distance calculation.

#### The end point (school)

The centre of the school grounds is used as the end point for home to school distance as defined by Islington Council.

Please note that you can't compare distances produced on Islington's Capita ONE system to those calculated using any personal or online geographical information system software you may have access to such as satellite navigations systems or Google maps.

Islington residents can obtain an approximate distance measurement to any Islington school using the following link: [calculate your home to school distance](#).

Alternatively, you can call the School Admissions team for an approximate measurement on 020 7527 5515.

### Cut-off distance

This is the distance of the last pupil admitted to the school under the 'distance' criterion. 'Cut-off' distances vary from year to year and are only given as a guide to help you assess the likelihood of being offered a place under the distance criterion.

For schools with a religious character (e.g., Catholic or Church of England schools) that use 'church' or 'faith' as one of their admission criteria, the 'cut-off distance' **only** applies to applicants considered under the final criterion of '**distance**' alone. It does not apply to other applicants considered under criteria with a higher priority (e.g., religious criteria related to faith or church).

**Please note that living within the previous year's cut-off distance doesn't guarantee your child a place at the school.**

Use the following link to find information on 'cut-off' distances for Islington schools [www.islington.gov.uk/cut-offdistance](http://www.islington.gov.uk/cut-offdistance).



---

# Multiple birth siblings

## Key Stage 1

If only one place is available at the school in reception class, Year 1 or Year 2 and the next child who qualifies for a place is one of multiple-birth siblings or has a sibling who is eligible for admission in the same year group, schools will go over their published admission number to support the family. These children will be deemed 'excepted' pupils under KS1 class size legislation.

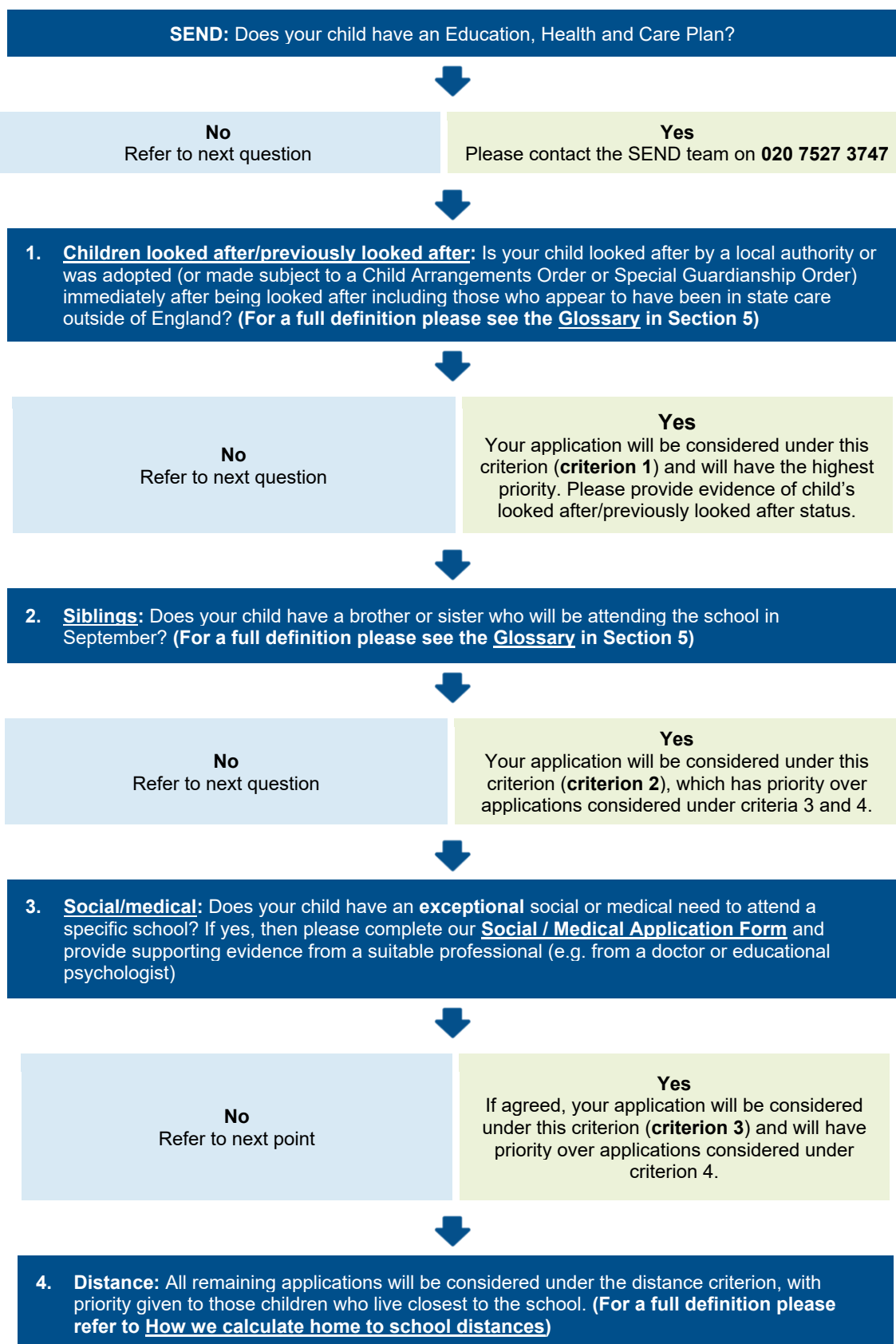
## Key Stage 2

For pupils in Years 3-6, if only one place is available at the school and the next child who qualifies for a place is one of multiple birth siblings or has a sibling who is eligible for admission in the same year group, we will ask community schools to admit the siblings and go over their published admission number to support the family.



**Don't forget –  
apply online by 15  
January 2026**

# Criteria flowchart



# Table of school places

The table below provides a summary of information for Islington primary schools for last year's admission round (admission in September 2025).

A. Name of school	B. School type	C. Published admission number (PAN)	D. Applications received	E. First preference applications received	F. Total offers made	G. EHCP offers made via SEN process	H. LAC/PLAC criterion offers	I. Sibling criterion offers	J. Social medical criterion offers	K. Other criteria offers	L. Distance criterion offers	M. Alternative offers *	N. Cut off Distance (miles)	O. Appeals lodged	P. Appeals upheld
Ambler	Community	60	270	82	60	0	1	29	2	N/A	28	0	0.271	6	0
Ashmount	Community	60	191	39	60	0	0	24	0	N/A	36	0	1.284	0	0
Canonbury	Community	60	256	50	60	0	1	19	1	N/A	39	0	0.560	2	0
Christ The King	Voluntary Aided (Catholic)	45	49	24	24	0	0	18	0	Faith: 3	3	0	N/A	0	0
COLPA-I	Academy	60	137	40	58	0	0	15	0	Children of Staff: 0	43	0	N/A	0	0
Drayton Park	Community	30	125	24	30	1	0	15	0	N/A	14	0	0.345	0	0
Duncombe	Community	60	99	34	42	2	0	16	0	N/A	19	5	N/A	0	0
Gillespie	Community	30	228	54	30	2	0	13	1	N/A	14	0	0.142	2	0
Grafton	Community	60	180	43	60	0	1	19	0	N/A	40	0	0.522	0	0
Hanover	Community	45	95	26	40	0	0	10	0	N/A	28	2	N/A	0	0
Hargrave Park	Community	45	89	26	34	0	0	14	0	N/A	18	2	N/A	0	0
Hugh Myddelton	Community	60	219	90	60	0	0	25	0	N/A	35	0	0.329	3	0
Hungerford	Academy	30	33	9	11	0	0	2	0	N/A	9	0	N/A	0	0
Laycock	Community	50	79	11	30	0	1	5	0	N/A	8	16	N/A	0	0
Moreland	Community	60	109	51	57	0	0	26	1	N/A	27	3	N/A	0	0
Newington Green	Community	60	169	67	60	0	1	24	0	N/A	35	0	0.311	2	0
Pakeman	Community	45	100	30	45	0	0	11	0	N/A	21	13	N/A	0	0
Pooles Park	Academy	30	25	8	9	0	0	3	0	N/A	6	0	N/A	0	0
Prior Weston	Community	30	51	23	23	2	0	8	0	N/A	13	0	N/A	0	0
Robert Blair	Community	30	41	14	24	0	0	5	0	N/A	12	7	N/A	0	0
Rotherfield	Community	30	59	22	29	1	0	8	0	N/A	15	5	N/A	0	0
Sacred Heart	Voluntary Aided (Catholic)	60	94	44	52	0	0	17	0	Faith: 30	5	0	N/A	0	0

A. Name of school	B. School type	C. Published admission number (PAN)	D. Applications received	E. First preference applications received	F. Total offers made	G. EHCP offers made via SEN process	H. LAC/PLAC criterion offers	I. Sibling criterion offers	J. Social medical criterion offers	K. Other criteria offers	L. Distance criterion offers	M. Alternative offers *	N. Cut off Distance (miles)	O. Appeals lodged	P. Appeals upheld
<b>St Andrew's Barnsbury</b>	Voluntary Aided (CofE)	30	48	8	10	0	0	5	N/A	Church: 2	3	0	N/A	0	0
<b>St Joan of Arc</b>	Voluntary Aided (Catholic)	60	162	59	60	1	0	25	N/A	Faith: 28	6	0	0.121	1	0
<b>St John Evangelist</b>	Voluntary Aided (Catholic)	40	66	25	29	0	0	0	4	Faith: 17 Children of Staff:0	7	0	N/A	0	0
<b>St John's Highbury Vale</b>	Voluntary Aided (CofE)	30	139	27	30	0	0	10	0	Church: 2 Children of Staff:0	18	0	0.309	0	0
<b>St John's Upper Holloway</b>	Voluntary Aided (CofE)	30	54	18	23	0	0	8	0	Church: 0	15	0	N/A	0	0
<b>St Joseph's</b>	Voluntary Aided (Catholic)	60	139	59	60	0	0	17	0	Faith: 35	8	0	2.736	0	0
<b>St Luke's</b>	Voluntary Aided (CofE)	30	54	20	21	0	0	7	N/A	Church: 0 Children of Staff: 0	14	0	N/A	0	0
<b>St Mark's</b>	Voluntary Aided (CofE)	30	73	28	30	0	0	7	N/A	Church: 1	22	0	0.383	0	0
<b>St Mary Magdalene Academy</b>	Academy (CofE)	30	140	41	30	0	3	9	N/A	Church: 9 Children of Staff: 1	8	0	0.316	2	0
<b>St Mary's Islington</b>	Voluntary Aided (CofE)	30	56	10	13	1	0	5	N/A	Church: 1	6	0	N/A	0	0
<b>St Peter and St Paul</b>	Voluntary Aided (Catholic)	30	65	31	30	0	0	10	0	Faith: 12	8	0	0.151	0	0
<b>The New North Academy</b>	Academy	30	51	15	16	0	0	6	0	Children of Staff: 0	10	0	N/A	0	0
<b>Thornhill</b>	Community	60	209	68	60	0	0	26	1	N/A	33	0	0.364	1	0
<b>Tufnell Park</b>	Community	60	181	45	60	0	1	26	0	N/A	33	0	0.522	0	0
<b>Vittoria</b>	Community	45	33	15	20	0	0	10	0	N/A	6	4	N/A	0	0
<b>Whitehall Park</b>	Free School	60	53	4	6	0	0	3	N/A	Children of Staff: 0	3	0	N/A	0	0
<b>William Tyndale</b>	Academy	60	318	109	60	1	0	28	0	Children of Staff: 0	31	0	0.291	0	0

A. Name of school	B. School type	C. Published admission number (PAN)	D. Applications received	E. First preference applications received	F. Total offers made	G. EHCP offers made via SEN process	H. LAC/PLAC criterion offers	I. Sibling criterion offers	J. Social medical criterion offers	K. Other criteria offers	L. Distance criterion offers	M. Alternative offers *	N. Cut off Distance (miles)	O. Appeals lodged	P. Appeals upheld
Winton	Community	30	95	34	30	0	1	17	0	N/A	12	0	0.329	0	0
Yerbury	Community	60	248	100	60	0	0	24	0	N/A	36	0	0.277	4	0

### Notes

\*M: Applicants who did not receive an offer at one of their stated preferences were reserved a place at their nearest Islington community school with a vacancy in line with the Council's published admissions policy.



# Section 3: What happens next?



## What happens to your application?

All London boroughs and some councils bordering London are part of the pan-London school admissions scheme. This makes applying for school places in the capital fairer and simpler.

### How does it work?

A secure computer system is used to exchange information between councils when residents apply for schools outside the borough where they live.

### Equal Preference

Every school you apply for is considered at the same time and your order of preference is kept confidential.

If your application meets the criteria for more than one school, you will be offered the highest preference possible, and all lower preferences will be withdrawn and released to other children. So, make sure you put the school you really want first as you will only receive one offer on National Offer Day.

Each school has a set number of available places – check the school's fact file for details.

### Admission Criteria

Where a school receives more applications than there are places available (i.e. it is oversubscribed) its published [admission criteria](#) will be used to decide which pupils will be offered the places. Each school's Fact File in this guide provides a link to the admission criteria. A summary of last year's results is provided in the [Table of school places](#).

## Offer Day

You will be informed of the outcome of your application on National Offer Day, **16 April 2026**. You can log onto eAdmissions from 5pm to find out the outcome of your application. You will also receive an email informing you of your result.

Please accept the place online by **30 April 2026**.

If you are an Islington resident and we can't offer your child a place at any school listed on your application, we will reserve a place at your nearest Islington school with an available place.

We will also inform you of where there are other vacancies to enable you to apply for alternative schools.

### Second round of offers

A second round of offers will be made on **14 May 2026** following completion of the acceptance and decline process. Any places declined from the first round of offers on national Offer Day are put back into the system for redistribution to other applicants. These offers are made in line with each school's published admission criteria.

The positive news is that by September many applicants are offered a higher preference school.

# Waiting lists and appeals

## Waiting lists

**Islington schools:** Your child's name will automatically be placed on the waiting list of any school listed as a higher preference on your original application than the school place offered.

Your child will remain on the waiting list until **31 December 2026**. After this date, **your child's name will be removed from all waiting lists**. To add your child to a waiting list, you will need to complete a fresh application form using Islington's online [In-year School Admissions Application](#).

**Schools outside Islington:** Please check whether you need to submit an in-year application to remain on the waiting list of a school outside Islington. In some local authorities, children are removed from waiting lists in July, and you may need to submit an in-year application for your child to remain on school waiting lists. For further information, please contact the local authority where the school is located.

### Please note:

- being on a waiting list will not guarantee a place at your preferred school
- your child's waiting list position can go down as well as up
- waiting list positions are considered strictly in accordance with the school's published [admission criteria](#) and are not affected by acceptance of a lower preference offer.

**You can accept the place offered, remain on the waiting list of any higher preference school and lodge an appeal all at the same time.**

## Right of appeal

You have the right of appeal under the School Standards & Framework Act 1998 against the refusal of a place at any of the schools listed on your application.

An independent panel will hear your appeal and their decision is binding for both the Admission Authority and the school(s). The panel will be made up of people who have experience in education and lay members (people without personal experience of school management or the provision of education).

## How do I lodge an admission appeal?

For Islington community schools, use this link to [appeal a school decision](#) by **22 May 2026**.

For other schools, contact the school directly to obtain an appeal form. The completed form should be returned to the school by the date given to you.

## **When will the appeal take place?**

Provided you lodge your appeal for an Islington community school by the deadline above, your appeal will be heard in **June or July 2026**.

## **What does the appeal panel consider?**

The appeal panel can only uphold an appeal (i.e., offer a school place) where:

1. The admission arrangements don't comply with legal requirements set out in the [School Admissions Code](#) and the [School Standards and Framework Act \(SSFA\) 1998](#)
2. The admission arrangements were not correctly or impartially applied
3. The decision to refuse admission was unreasonable given the circumstances of the case.

The panel must then decide whether the admission of additional children would prejudice the provision of efficient education or the efficient use of resources.

## **Class size**

The law states that children in reception class (and in years 1 and 2) must not be taught in classes of more than 30 pupils with only one school teacher. This legislation will be taken into account in admission appeals.

## **Appeal a school decision**

## Junior admissions and applying during the school year

### Junior admissions

In most primary schools, children transfer from year 2 to year 3 automatically. If your child attends an Islington primary school, then the transfer will be automatic.

However, there are some primary schools in other local authorities where the junior school is separate to the infant school. If this is the case, Islington residents will need to complete our online [Junior Admissions Application](#)

If you don't live in Islington, please contact your local council.

You must submit your online application by **15 January 2026** for it to be on-time. After this date your application will be late and the chances of getting a place at your preferred school may be reduced.

You will be notified of the result of your application in the evening of the **16 April 2026**.

Please contact the School Admissions team on 020 7527 5515 for further advice.

### Applying during the school year

If you are an Islington resident applying for a primary school place and your child is not due to start reception in **September 2026**, use our [In-Year School Admissions Application Form](#).

You can apply for up to **three** schools.

If you live in another borough, you can also apply for an Islington school using our online form.

### Waiting lists

**Please note that waiting lists are cleansed each term.** If you wish to remain on the waiting list, you will need to submit another application. [Apply here](#).

## Fair access protocol

All local authorities are required to have a **'Fair Access Protocol'** to ensure that **unplaced and vulnerable children, and those who are having difficulty in securing a school place in-year**, are found suitable education provision as quickly as possible. If there are no vacancies in any Islington schools, we may ask schools to go over their published admission number except at Key Stage 1 (reception and years 1 and 2) due to infant class-size legislation.

The following children who are unplaced, vulnerable or who are having difficulty securing a school place in-year **may** be eligible for admission under **Islington's Fair Access Protocol**:

- a) Children subject to a Child in Need Plan or a Child Protection Plan within the last 12 months
- b) Children living in a refuge or in other Relevant Accommodation
- c) Children from the criminal justice system
- d) Children who have been permanently excluded or those deemed suitable for reintegration to mainstream education from pupil referral units
- e) Children with special educational needs (but without an Education, Health and Care plan), disabilities or medical conditions
- f) Children who are carers
- g) Children who are homeless
- h) Children in formal kinship care arrangements
- i) Children of Gypsies, Roma, Travellers, refugees, and asylum seekers
- j) Children who have been refused a place due to their challenging behaviour
- k) Children for whom a place has not been sought due to exceptional circumstances
- l) Children who have been out of education for four or more weeks and
- m) Previously looked after children for whom the local authority has been unable to secure a school place promptly.

Applications for school places under [Islington's Fair Access Protocol](#) are considered by a multi-agency panel which decides whether pupils should be admitted under the protocol, and which schools should be allocated. Schools are allocated on a 'fair share' basis to ensure no individual school takes a disproportionate number of children under the protocol. Therefore, parental preference may not always be met. For further information, please contact the School Admissions team on 020 7527 5515 or refer to [Islington's Fair Access Protocol](#).



# Section 4:

## Islington's Schools

---

Please check schools' websites for the latest information on tours and Open Days.



# Ambler Primary School and Children's Centre

## Fact file

**Head Teacher:** Sandeep McNicholl

**Address:** Blackstock Road, N4 2DR

**[Ambler Primary School map](#)**

**Bus routes:** 4, 19, 29, 106, 210, 236, 253, 259, W4, W7

**Nearest station:** Finsbury Park



Type of School:	Mixed Community
Age range:	0 - 11
Total number of places available at the school (YR-Y6):	420
Number of places available in reception class:	60
School start and finish times:	8.30am soft start - 3.30pm
Accessibility:	Fully accessible on the ground floor
DfE Code:	206/2015
<a href="#">Ambler Primary School admissions criteria</a>	
Last pupil admitted under distance criterion in Sept 2025:	0.271 miles
<a href="#">Calculate your home to school distance</a>	
<b>Website:</b> <b>Contact name for admission enquiries:</b> <b>Email:</b> <b>Telephone:</b> <b>Instagram:</b>	<a href="http://www.ambler.islington.sch.uk">www.ambler.islington.sch.uk</a> Sajeha Miah <a href="mailto:office@ambler.islington.sch.uk">office@ambler.islington.sch.uk</a> 020 7226 4708 <a href="https://www.instagram.com/AmblerN4">@AmblerN4</a>
Does the school have two-year-old provision?	Yes
Does the school have a nursery class?	Yes
Does the school have a breakfast club?	Yes - from 8am
Does the school have any after-school childcare?	Yes - until 5:45pm
Does the school have a uniform?	Yes
Visiting dates:	For tours during Autumn term, please visit <a href="#">Eventbrite</a> for dates and bookings. For other requests, please contact the school office.

# Ashmount Primary School

## Fact file

**Head Teacher:** Anthony Carmel

**Address:** Crouch Hill Park, 83 Crouch Hill, N8 9EG

**Ashmount Primary School map**

**Bus routes:** 91, W7, 41

**Nearest stations:** Finsbury Park (Tube), Crouch Hill (Overground)



Type of School:	Mixed Community
Age range:	3 - 11
Total number of places available at the school (YR-Y6):	420
Number of places available in reception class:	60
School start and finish times:	8.45am (soft start) - 3.15pm
Accessibility:	Fully accessible building with lift
DfE Code:	206/2809
<a href="#">Ashmount Primary School admissions criteria</a>	
Last pupil admitted under distance criterion in Sept 2025:	1.284 miles
<a href="#">Calculate your home to school distance</a>	
<b>Website:</b> <b>Contact name for admission enquiries:</b> <b>Email:</b> <b>Telephone:</b> <b>X (Twitter):</b>	<a href="http://www.ashmountprimaryschool.co.uk">www.ashmountprimaryschool.co.uk</a> Shajia Abdal <a href="mailto:office@ashmount.islington.sch.uk">office@ashmount.islington.sch.uk</a> 020 7272 7145 <a href="https://twitter.com/AshmountPrimary">@AshmountPrimary</a>
Does the school have two-year-old provision?	No
Does the school have a nursery class?	Yes
Does the school have a breakfast club?	Yes
Does the school have any after-school childcare?	Yes – onsite facilities
Does the school have a uniform?	Yes
Visiting dates:	First and last Thursday of every month at 9.30am Please contact the school to arrange a visit.

# Canonbury Primary School

## Fact file

**Head Teacher:** Patrick Mildren

**Address:** Canonbury Road, N1 2UT

**Canonbury Primary School map**

**Bus routes:** 4, 19, 21, 30, 43, 263, 393

**Nearest station:** Highbury and Islington



Type of School:	Mixed Community
Age range:	3 - 11
Total number of places available at the school (YR-Y6):	420
Number of places available in reception class:	60
School start and finish times:	8.45am (soft start) - 3.15pm (Nursery and Reception) 3.25pm (KS1) 3.30pm (KS2)
Accessibility:	Disabled access to ground floor only
DfE Code:	206/2854
<a href="#">Canonbury Primary School admissions criteria</a>	
Last pupil admitted under distance criterion in Sept 2025:	0.560 miles
<a href="#">Calculate your home to school distance</a>	
<b>Website:</b> <b>Contact name for admission enquiries:</b> <b>Email:</b> <b>Telephone:</b> <b>X (Twitter):</b>	<a href="http://www.canonburyprimaryschool.co.uk">www.canonburyprimaryschool.co.uk</a> Sarah Ouldcott (Office Manager) <a href="mailto:Sarah.ouldcott@canonbury.islington.sch.uk">Sarah.ouldcott@canonbury.islington.sch.uk</a> 020 7226 5020 <a href="https://twitter.com/CanonburySchool">@CanonburySchool</a>
Does the school have two-year-old provision?	No
Does the school have a nursery class?	Yes
Does the school have a breakfast club?	Yes
Does the school have any after-school childcare?	Yes
Does the school have a uniform?	Yes
Visiting dates:	Please see the school website for details or contact the school to arrange a visit

# Christ the King Primary School

## Fact file

**Executive Head Teacher:** Mr John Lane

**Deputy Head Teachers:** Alex Fernandez-Madden and Tracy Lane

**Assistant Head Teacher:** Alice Brady

**Address:** 55 Tollington Park, N4 3QW

**Christ the King Primary School map**

**Bus routes:** 4, 19, 46, 210, 271, W3, W7

**Nearest station:** Finsbury Park



Type of School:	Mixed Voluntary-aided Catholic
Age range:	3 - 11
Total number of places available at the school (YR-Y6):	360
Number of places available in reception class:	45
School start and finish times:	8.50am - 3.30pm (Soft start 8.40)
Accessibility:	Fully accessible
DfE Code:	206/3633
<a href="#">Christ the King Primary School admissions criteria</a>	
<a href="#">Christ the King Primary School Supplementary Information Form (SIF)</a>	
Distance of last pupil admitted under final criterion (distance) in Sept 2025:	Does not apply
<a href="#">Calculate your home to school distance</a>	
<b>Website:</b> <b>Contact name for admission enquiries:</b> <b>Email:</b> <b>Telephone:</b> <b>X (Twitter):</b>	<a href="http://www.ctks.co.uk">www.ctks.co.uk</a> Nichola Beveridge <a href="mailto:admin@ctks.co.uk">admin@ctks.co.uk</a> 020 7272 5987 <a href="https://twitter.com/ctks_islington">@ctks_islington</a>
Does the school have two-year-old provision?	No
Does the school have a nursery class?	Yes
Does the school have a breakfast club?	Yes – from 8.00am
Does the school have any after-school childcare?	Yes – until 6.00pm
Does the school have a uniform?	Yes
Visiting dates:	Please contact the school to arrange a tour/visit



# City of London Primary Academy Islington

## Fact file

**Head Teacher:** Ms Kim Clapham

**Address:** 15 Baltic Street West, EC1Y 0AE

**[City of London Primary Academy Islington map](#)**

**Bus routes:** 4, 55, 56, 153 and 243

**Nearest stations:** Barbican and Old Street



Type of School:	Mixed Academy
Age range:	4 - 11
Total number of places available at the school (YR-Y6):	390
Number of places available in reception class:	60
School start and finish times:	8.30am-3.15pm (Reception) 8.30am-3.30pm (Years 1 to 6)
Accessibility:	Lift access
DfE Code:	206/2001
<a href="#">City of London Primary Academy Islington admissions criteria</a>	
Last pupil admitted under distance criterion in Sept 2025:	Does not apply
<a href="#">Calculate your home to school distance</a>	
<b>Website:</b> <b>Contact name for admission enquiries:</b> <b>Email:</b> <b>Telephone:</b>	<a href="http://www.colpai.org.uk">www.colpai.org.uk</a> Denitsa Petkova <a href="mailto:office@islingtonprimary.colpa.org.uk">office@islingtonprimary.colpa.org.uk</a> 020 7504 0556
Does the school have two-year-old provision?	No
Does the school have a nursery class?	No
Does the school have a breakfast club?	Yes (7.15am-8.30am)
Does the school have any after-school childcare?	Yes (3.15pm-6.00pm)
Does the school have a uniform?	Yes
Visiting dates:	Every Tuesday, 9.00am by appointment

# Drayton Park Primary School

## Fact file

**Head Teacher:** Annabelle Kapoor

**Address:** Arvon Road, N5 1PJ

**Drayton Park Primary School map**

**Bus routes:** 43, 271, 263, 393, 153

**Nearest stations:** Drayton Park (Overground)  
Holloway Road / Arsenal / Highbury & Islington (Tube)



Type of School:	Mixed Community
Age range:	3 - 11
Total number of places available at the school (YR-Y6):	300
Number of places available in reception class:	30
School start and finish times:	8.45am (soft start) - 3.30pm
Accessibility:	Wheelchair access to the ground floor
DfE Code:	206/2166
<a href="#">Drayton Park Primary admissions criteria</a>	
Last pupil admitted under distance criterion in Sept 2025:	0.345 miles
<a href="#">Calculate your home to school distance</a>	
<b>Website:</b> <b>Contact name for admission enquiries:</b> <b>Email:</b> <b>Telephone:</b> <b>X (Twitter) and Instagram:</b>	<a href="http://www.draytonpark.islington.sch.uk">www.draytonpark.islington.sch.uk</a> Margaret Hervie <a href="mailto:admin@draytonpark.islington.sch.uk">admin@draytonpark.islington.sch.uk</a> 020 7607 4142 <a href="https://twitter.com/DraytonParkSch">@DraytonParkSch</a>
Does the school have two-year-old provision?	No
Does the school have a nursery class?	Yes
Does the school have a breakfast club?	Yes
Does the school have any after-school childcare?	Yes
Does the school have a uniform?	Yes
Visiting dates:	We offer weekly tours and would love to show you around and tell you about our school. Contact the office and we can book you in.



# Duncombe Primary School

## Fact file

**Interim Executive Head:** Ms M Braithwaite

**Interim Head of School:** Katija Ali

**Address:** Sussex Way, N19 4JA

**Duncombe Primary School map**

**Bus routes:** 41, 43, 91, 210, 263, 271

**Nearest stations:** Archway, Finsbury Park (Tube) and Crouch Hill (Overground)



Type of School:	Mixed Community
Age range:	2 - 11
Total number of places available at the school (YR-Y6):	420
Number of places available in reception class:	60
School start and finish times:	8.50am - 3.30pm
Accessibility:	Fully accessible on the ground floor; accessible toilets; yellow nosing for the visually impaired
DfE Code:	206/2170
<a href="#">Duncombe Primary School admissions criteria</a>	
Last pupil admitted under distance criterion in Sept 2025:	Does not apply
<a href="#">Calculate your home to school distance</a>	
<b>Website:</b> <b>Contact name for admission enquiries:</b> <b>Email:</b> <b>Telephone:</b> <b>X (Twitter):</b>	<a href="http://www.duncombeprimary.co.uk">www.duncombeprimary.co.uk</a> Camilla McGee <a href="mailto:success@duncombeprimary.co.uk">success@duncombeprimary.co.uk</a> 020 7272 5620 <a href="https://twitter.com/DuncombePrimary">@DuncombePrimary</a>
Does the school have two-year-old provision?	Yes
Does the school have a nursery class?	Yes
Does the school have a breakfast club?	Yes, open from 7am
Does the school have any after-school childcare?	Yes, until 6pm
Does the school have a uniform?	Yes
Visiting dates:	Tuesdays at 9.15am: 2025 - 23 September, 7 & 21 October, 11 & 25 November, 9 December 2026 - 13 January Please contact the school for a tour

# Gillespie Primary School

## Fact file

**Head Teacher:** Mark Owen

**Address:** Gillespie Road, N5 1LH

**Gillespie Primary School map**

**Bus routes:** 4, 19, 106, and 236

**Nearest station:** Arsenal



Type of School:	Mixed Community
Age range:	3 - 11
Total number of places available at the school (YR-Y6):	210
Number of places available in reception class:	30
School start and finish times:	8.55am - 3.30pm
Accessibility:	Wheelchair access to the ground floor only
DfE Code:	206/2251
<a href="#">Gillespie Primary School admissions criteria</a>	
Last pupil admitted under distance criterion in Sept 2025:	0.142 miles
<a href="#">Calculate your home to school distance</a>	
<b>Website:</b> <b>Contact name for enquiries:</b> <b>Email:</b> <b>Telephone:</b> <b>X (Twitter):</b>	<a href="http://www.gillespie.islington.sch.uk">www.gillespie.islington.sch.uk</a> Rebecca Williams <a href="mailto:office@gillespie.islington.sch.uk">office@gillespie.islington.sch.uk</a> 020 7226 6840 <a href="https://twitter.com/GillespieSchool">@GillespieSchool</a>
Does the school have two-year-old provision?	No
Does the school have a nursery class?	Yes
Does the school have a breakfast club?	Yes
Does the school have any after-school childcare?	Yes
Does the school have a uniform?	Yes
Visiting dates:	Please contact school office for dates

# Grafton Primary School

## Fact file

**Head Teacher:** Andrew Turnock

**Address:** Eburne Road, N7 6AR

**Grafton Primary School map**

**Bus routes:** 4, 29, 91, 253, 254, 259, 43, 271

**Nearest stations:** Holloway Road and Finsbury Park



Type of School:	Mixed Community
Age range:	2 - 11
Total number of places available at the school (YR-Y6):	420
Number of places available in reception class:	60
School start and finish times:	9.00am – 3.30pm
Accessibility:	Fully accessible building
DfE Code:	206/2261
<a href="#">Grafton Primary School admissions criteria</a>	
Last pupil admitted under distance criterion in Sept 2025:	0.522 miles
<a href="#">Calculate your home to school distance</a>	
<b>Website:</b> <b>Contact name for admission enquiries:</b> <b>Email:</b> <b>Telephone:</b>	<a href="http://www.graftonschool.co.uk">www.graftonschool.co.uk</a> Jeni Whelan <a href="mailto:Jeni.whelan@grafton.islington.sch.uk">Jeni.whelan@grafton.islington.sch.uk</a> 020 7272 3284
Does the school have two-year-old provision?	Yes
Does the school have a nursery class?	Yes
Does the school have a breakfast club?	Yes
Does the school have any after-school childcare?	Yes
Does the school have a uniform?	No
Visiting dates:	9.45am every Wednesday. Please contact the school office to book a place

# Hanover Primary School

## Fact file

**Head Teacher:** Polly Shields

**Address:** Noel Road, N1 8BD

**Hanover Primary School map**

**Bus routes:** 4, 19, 30, 38, 43, 56, 73, 341, 476

**Nearest station:** Angel



Type of School:	Mixed Community
Age range:	3 - 11
Total number of places available at the school (YR-Y6):	270
Number of places available in reception class:	30
School start and finish times:	8.50am - 3.30pm
Accessibility:	Wheelchair access and lifts
DfE Code:	206/2279
<a href="#">Hanover Primary School admissions criteria</a>	
Last pupil admitted under distance criterion in Sept 2025:	Does not apply
<a href="#">Calculate your home to school distance</a>	
<b>Website:</b> <b>Contact name for admission enquiries:</b> <b>Email:</b> <b>Telephone:</b> <b>Instagram:</b>	<a href="http://www.hanover.islington.sch.uk">www.hanover.islington.sch.uk</a> Marcia Norbal <a href="mailto:admin@hanover.islington.sch.uk">admin@hanover.islington.sch.uk</a> 020 7689 8949 <a href="https://www.instagram.com/hanoverschool/">@hanoverschool</a>
Does the school have two-year-old provision?	No
Does the school have a nursery class?	Yes
Does the school have a breakfast club?	Yes
Does the school have any after-school childcare?	Yes
Does the school have a uniform?	No
Visiting dates:	Please check school website for an updated list of <a href="#">open mornings</a>

# Hargrave Park School

## Fact file

**Executive Head Teacher:** Lisa Horton

**Head of School:** Charlie Baverstock

**Address:** 51 Bredgar Road, N19 5BS

**Hargrave Park School map**

**Bus routes:** 4, 17, 41, 43, 134, 143, 210, 263, 271, 390, C11, W5

**Nearest station:** Archway



Type of School:	Mixed Community
Age range:	6 months - 11 years
Total number of places available at the school (YR-Y6):	315
Number of places available in reception class:	30
School start and finish times:	8.40am (soft start) 9am (registration) - 3.30pm
Accessibility:	Wheelchair access, accessible toilets
DfE Code:	206/2282
<a href="#">Hargrave Park School admissions criteria</a>	
Last pupil admitted under distance criterion in Sept 2025:	Does not apply
<a href="#">Calculate your home to school distance</a>	
<b>Website:</b> <b>Contact name for admission enquiries:</b> <b>Email:</b> <b>Telephone:</b> <b>X (Twitter):</b>	<a href="http://www.hargravepark.com">www.hargravepark.com</a> Mr Lacka Rathore <a href="mailto:Parents@hargravepark.islington.sch.uk">Parents@hargravepark.islington.sch.uk</a> 020 7272 3989 <a href="https://twitter.com/hargravepark">@hargravepark</a>
Does the school have two-year-old provision?	Yes
Does the school have a nursery class?	Yes
Does the school have a breakfast club?	Yes
Does the school have any after-school childcare?	Yes
Does the school have a uniform?	Yes
Visiting dates:	Please contact the school to arrange a tour/visit

# Hugh Myddelton Primary School

## Fact file

**Head Teacher:** Sarah Gill

**Address:** Myddelton Street, EC1R 1YJ

**Hugh Myddelton Primary School map**

**Bus routes:** 4, 19, 38, 153, 341



Type of School:	Mixed Community
Age range:	2 - 11
Total number of places available at the school (YR-Y6):	420
Number of places available in reception class:	60
School start and finish times:	8.55am - 3.30pm
Accessibility:	Wheelchair access, lift, accessible toilets
DfE Code:	206/2855
<a href="#">Hugh Myddelton Primary School admissions criteria</a>	
Last pupil admitted under distance criterion in Sept 2025:	0.329 miles
<a href="#">Calculate your home to school distance</a>	
<b>Website:</b> <b>Contact name for admission enquiries:</b> <b>Email:</b> <b>Telephone:</b>	<a href="http://www.lqps.co.uk/hughmyddelton">www.lqps.co.uk/hughmyddelton</a> Lauren McVey or Laura Bartle <a href="mailto:lmcvey@lqps.co.uk">lmcvey@lqps.co.uk</a> 020 7278 6075
Does the school have two-year-old provision?	Yes
Does the school have a nursery class?	Yes
Does the school have a breakfast club?	Yes
Does the school have any after-school childcare?	Yes
Does the school have a uniform?	Yes
Visiting dates:	Please phone the office on 020 7278 6075 to book a school tour



# Hungerford Primary School

## Fact file

**Executive Headteacher:** Jo Stephens

**Head of School:** Tanya Spain

**Address:** 249 Hungerford Road, N7 9LF

**Hungerford Primary School map**

**Bus routes:** 29, 253, 390, 393, 17, 91, 259, 274

**Nearest station:** Caledonian Road



Type of School:	Mixed Academy
Age range:	3 - 11
Total number of places available at the school (YR-Y6):	420
Number of places available in reception class:	30
School start and finish times:	9.00am - 3.30pm
Accessibility:	Wheelchair accessible
DfE Code:	206/2003
<a href="#">Hungerford Primary School admissions criteria</a>	
Last pupil admitted under distance criterion in Sept 2025:	Does not apply
<a href="#">Calculate your home to school distance</a>	
<b>Website:</b> <b>Contact name for admission enquiries:</b> <b>Email:</b> <b>Tel:</b> <b>X (Twitter):</b>	<a href="http://www.Thebridgetrust.academy">www.Thebridgetrust.academy</a> Jo Stephens <a href="mailto:hungerfordadmin@thebridgetrust.academy">hungerfordadmin@thebridgetrust.academy</a> 020 7619 1000 (Option 2) <a href="https://twitter.com/hungerfordN7">@hungerfordN7</a>
Does the school have two-year-old provision?	No
Does the school have a nursery class?	Yes
Does the school have a breakfast club?	Yes – free from 8am
Does the school have any after-school childcare?	Yes – free until 6pm
Does the school have a uniform?	Yes
Visiting dates:	We are flexible with days and times



# Laycock Primary School

## Fact file

**Executive Head Teacher:** Jenny Lewis

**Head of School:** Fred Hall

**Address:** Laycock Street, N1 1SW

**[Laycock Primary School map](#)**

**Bus routes:** 4, 19, 30, 43, 271

**Nearest station:** Highbury and Islington



Type of School:	Mixed Community
Age range:	3 - 11
Total number of places available at the school (YR-Y6):	210
Number of places available in reception class:	50
School start and finish times:	8.40am - 3.15pm
Accessibility:	Wheelchair access, lift. Accessible toilets, adaptations for hearing impairment
DfE Code:	206/2379
<a href="#">Laycock Primary School admissions criteria</a>	Applications for the <b>Deaf Provision</b> can <b>only</b> be made via Islington's SEND team
Last pupil admitted under distance criterion in Sept 2025:	Does not apply
<a href="#">Calculate your home to school distance</a>	
<b>Website:</b> <b>Contact name for admission enquiries:</b> <b>Email:</b> <b>Telephone:</b>	<a href="https://www.laycock.islington.sch.uk/">https://www.laycock.islington.sch.uk/</a> Lynsey Houlton <a href="mailto:office@laycock.islington.sch.uk">office@laycock.islington.sch.uk</a> 020 7226 2927
Does the school have two-year-old provision?	No
Does the school have a nursery class?	Yes
Does the school have a breakfast club?	Yes (Free from 8.15am or paid from 7.45am)
Does the school have any after-school childcare?	Yes (From 3.15pm-6pm)
Does the school have a uniform?	Yes
Visiting dates:	Please call or email the school to arrange a tour: <a href="mailto:office@laycock.islington.sch.uk">office@laycock.islington.sch.uk</a>

# Moreland Primary School and Children's Centre

## Fact file

**Head Teacher:** Catherine Lawrence

**Address:** Moreland Street, EC1V 8BB

**Moreland Primary School and Children's Centre map**

**Bus routes:** 4, 43, 205, 394, 56

**Nearest stations:** Angel and Old Street



Type of School:	Mixed Community
Age range:	0 - 11
Total number of places available at the school (YR-Y6):	420
Number of places available in reception class:	60
School start and finish times:	9.00am - 3.30pm
Accessibility:	Fully accessible building including lift and accessible toilets
DfE Code:	206/2429
<a href="#">Moreland Primary School and Children's Centre admissions criteria</a>	
Last pupil admitted under distance criterion in Sept 2025:	Does not apply
<a href="#">Calculate your home to school distance</a>	
<b>Website:</b> <b>Contact name for admission enquiries:</b> <b>Email:</b> <b>Telephone:</b> <b>X (Twitter):</b>	<a href="http://www.moreland-islington.co.uk">www.moreland-islington.co.uk</a> Sandra Owens and Catherine Bradley <a href="mailto:admin@moreland.islington.sch.uk">admin@moreland.islington.sch.uk</a> 020 7253 8144 <a href="https://twitter.com/morelandprimary">@morelandprimary</a>
Does the school have two-year-old provision?	Yes
Does the school have a nursery class?	Yes
Does the school have a breakfast club?	Yes
Does the school have any after-school childcare?	Yes
Does the school have a uniform?	Yes
Visiting dates:	Please call or email the school office to arrange a time to visit. All tours start at 9.30am.

# Newington Green Primary School

## Fact file

**Executive Head:** Paul Thomas

**Head of School:** Mairead McDonnell

**Address:** Matthias Road, N16 8NP

**Newington Green Primary School map**

**Bus routes:** 73, 141, 236, 476

**Nearest stations:** Canonbury or Dalston Kingsland



Type of School:	Mixed Community
Age range:	2 - 11
Total number of places available at the school (YR-Y6):	420
Number of places available in reception class:	60
School start and finish times:	8.55am - 3.30pm
Accessibility:	Ground floor accessible only
DfE Code:	206/2853
<a href="#">Newington Green Primary School admissions criteria</a>	
Last pupil admitted under distance criterion in Sept 2025:	0.311 miles
<a href="#">Calculate your home to school distance</a>	
<b>Website:</b> <b>Contact name for admission enquiries:</b> <b>Email:</b> <b>Telephone:</b> <b>X (Twitter):</b> <b>Instagram:</b>	<a href="http://www.newingtongreen.co.uk">www.newingtongreen.co.uk</a> Olivia McCarty <a href="mailto:admin@newingtongreen.co.uk">admin@newingtongreen.co.uk</a> 020 7254 3092 <a href="https://twitter.com/NewingtonGreenN16@NGPrimary">NewingtonGreenN16@NGPrimary</a> <a href="https://www.instagram.com/NewingtonGreenPrimary">NewingtonGreenPrimary</a>
Does the school have two-year-old provision?	Yes
Does the school have a nursery class?	Yes
Does the school have a breakfast club?	Yes (from 7.30am)
Does the school have any after-school childcare?	Yes (until 6.30pm)
Does the school have a uniform?	Yes
Visiting dates:	Please call or email the school office to arrange a time to visit that suits you

# Pakeman Primary School

## Fact file

**Head Teacher:** Emma Bonnin

**Address:** Hornsey Road, N7 6DU

**Pakeman Primary School map**

**Bus routes:** 4, 29, 91, 153, 253, 254, 259

**Nearest stations:** Holloway Road, Finsbury Park, Arsenal



Type of School:	Mixed Community
Age range:	2 – 11
Total number of places available at the school (YR-Y6):	315
Number of places available in reception class:	45
School start and finish times:	8.45am (soft start) 9.00am (registration) – 3.30pm
Accessibility:	Wheelchair accessibility to the ground floor, accessible toilets
DfE Code:	206/2455
<a href="#">Pakeman Primary School admissions criteria</a>	
Last pupil admitted under distance criterion in Sept 2025:	Does not apply
<a href="#">Calculate your home to school distance</a>	
<b>Website:</b> <b>Contact name for admission enquiries:</b> <b>Email:</b> <b>Telephone:</b> <b>X (Twitter):</b>	<a href="http://www.pakemanprimary.co.uk">www.pakemanprimary.co.uk</a> Ann Dwyer <a href="mailto:admin@pakeman.islington.sch.uk">admin@pakeman.islington.sch.uk</a> 020 7607 2575 <a href="https://twitter.com/PakemanSchool">@PakemanSchool</a>
Does the school have two-year-old provision?	Yes
Does the school have a nursery class?	Yes
Does the school have a breakfast club?	Yes
Does the school have any after-school childcare?	Yes
Does the school have a uniform?	Yes
Visiting dates:	Please contact the school to arrange a tour/visit

# Pooles Park Primary School

## Fact file

**Executive Headteacher:** Jo Stephens

**Head of School:** Craig Taylor

**Address:** Lennox Road, N4 3NW

**Pooles Park Primary School map**

**Bus routes:** 4, 19, 210

**Nearest station:** Finsbury Park



Type of School:	Mixed Academy
Age range:	3 – 11
Total number of places available at the school (YR-Y6):	330
Number of places available in reception class:	30
School start and finish times:	8.45am (soft start) 9.00am (registration) – 3.30pm (early years 3.20pm)
Accessibility:	Fully accessible building (only on the ground floor)
DfE Code:	206/2004
<a href="#">Pooles Park Primary School admissions criteria</a>	
Last pupil admitted under distance criterion in Sept 2025:	Does not apply
<a href="#">Calculate your home to school distance</a>	
<b>Website:</b> <b>Contact name for admission enquiries:</b> <b>Email:</b> <b>Tel:</b>	<a href="http://www.thebridgetrust.academy">www.thebridgetrust.academy</a> <a href="mailto:poolespark@thebridgetrust.academy">poolespark@thebridgetrust.academy</a> 020 7272 2655
Does the school have two-year-old provision?	No
Does the school have a nursery class?	Yes
Does the school have a breakfast club?	Yes, free from 8am
Does the school have any after-school childcare?	Yes, free until 6pm
Does the school have a uniform?	Yes
Visiting dates:	Please contact the school office to arrange a visit/tour.

# Prior Weston Primary School and Children's Centre

## Fact file

**Head Teacher:** Fiona MacCorquodale

**Address:** 101 Whitecross Street, EC1Y 8JA

**Prior Weston Primary School and Children's Centre map**

**Bus routes:** 4, 21, 53, 56, 76, 153, 214,

**Nearest station:** Moorgate, Barbican or Liverpool Street



Type of School:	Mixed Community
Age range:	0 – 11
Total number of places available at the school (YR-Y6):	390
Number of places available in reception class:	30
School start and finish times:	8.45am (soft start) 9.00am (registration) – 3.30pm
Accessibility:	Fully accessible building including lift and accessible toilets with hoist
DfE Code:	206/2850
<a href="#">Prior Weston Primary School and Children's Centre admissions criteria</a>	
Last pupil admitted under distance criterion in Sept 2025:	Does not apply
<a href="#">Calculate your home to school distance</a>	
<b>Website:</b> <b>Contact name for admission enquiries:</b> <b>Email:</b> <b>Telephone:</b> <b>X (Twitter):</b>	<a href="http://www.priorweston.islington.sch.uk">www.priorweston.islington.sch.uk</a> Adam Cornwall Jones <a href="mailto:office@priorweston.islington.sch.uk">office@priorweston.islington.sch.uk</a> 020 7786 4800 <a href="https://twitter.com/Prior_Weston">@Prior_Weston</a>
Does the school have two-year-old provision?	Yes
Does the school have a nursery class?	Yes
Does the school have a breakfast club?	Yes
Does the school have any after-school childcare?	Yes
Does the school have a uniform?	No
Visiting dates:	Please contact the school to arrange a tour or visit



# Robert Blair School

## Fact file

**Executive Head Teacher:** Lisa Horton

**Head of School:** Sara Liney

**Address:** Brewery Road, N7 9QJ

**Robert Blair School map**

**Bus routes:** 17, 91, 153, 259, 274, 390, 393

**Nearest stations:** Caledonian Road (Tube) or  
Caledonian Road and Barnsbury (Overground)



Type of School:	Mixed Community
Age range:	6 months – 11
Total number of places available at the school (YR-Y6):	210
Number of places available in reception class:	30
School start and finish times:	8.45am (soft start) 9.00am registration – 3.15pm with extended day provision from 8.00am to 6.00pm
Accessibility:	Wheelchair accessibility to the ground floor and accessible toilet
DfE Code:	206/2515
<a href="#">Robert Blair School admissions criteria</a>	
Last pupil admitted under distance criterion in Sept 2025:	Does not apply
<a href="#">Calculate your home to school distance</a>	
<b>Website:</b> <b>Contact name for admission enquiries:</b> <b>Email:</b> <b>Telephone:</b> <b>X (Twitter):</b>	<a href="http://www.robertblairschool.com">www.robertblairschool.com</a> Nilufa Salik <a href="mailto:admin@robertblair.islington.sch.uk">admin@robertblair.islington.sch.uk</a> 020 7607 4115 <a href="https://twitter.com/RobertBlairSch">@RobertBlairSch</a>
Does the school have two-year-old provision?	Yes, we have a Childrens centre with 6 months to 3-year-old provision
Does the school have a nursery class?	Yes
Does the school have a breakfast club?	Yes
Does the school have any after-school childcare?	Yes
Does the school have a uniform?	Yes
Visiting dates:	Please call or email the school office to arrange a time that suits you



# Rotherfield Primary School

## Fact file

**Executive Head Teacher:** Paul Thomas

**Head of School:** Nia Silverwood

**Address:** Rotherfield Street, N1 3EE

**Rotherfield Primary School map**

**Bus routes:** 21, 38, 73, 76, 141, 271

**Nearest stations:** Essex Road overground,  
Highbury and Islington underground



Type of School:	Mixed Community
Age range:	3 - 11
Total number of places available at the school (YR-Y6):	390
Number of places available in reception class:	30
School start and finish times:	8.55am to 3.30pm
Accessibility:	Wheelchair access to the ground floor only
DfE Code:	206/2857
<a href="#">Rotherfield Primary School admissions criteria</a>	
Last pupil admitted under distance criterion in Sept 2025:	Does not apply
<a href="#">Calculate your home to school distance</a>	
<b>Website:</b> <b>Contact name for admission enquiries:</b> <b>Email:</b> <b>Telephone:</b> <b>Instagram:</b>	<a href="http://www.rotherfieldprimaryschool.co.uk">www.rotherfieldprimaryschool.co.uk</a> Olivia McCarty <a href="mailto:admin@rotherfieldprimary.co.uk">admin@rotherfieldprimary.co.uk</a> 020 7226 6620 <a href="https://www.instagram.com/RotherfieldPrimarySchool">@RotherfieldPrimarySchool</a>
Does the school have two-year-old provision?	No
Does the school have a nursery class?	Yes
Does the school have a breakfast club?	Yes (from 7.45am)
Does the school have any after-school childcare?	Yes (until 6.30pm)
Does the school have a uniform?	Yes
Visiting dates:	Please call or email the school office to arrange a time that suits you

# Sacred Heart Catholic Primary School

## Fact file

**Head Teacher:** John Lane

**Address:** 68 Georges Road, N7 8JN

**Sacred Heart Catholic Primary School map**

**Bus routes:** 43, 153, 271, 17, 91

**Nearest stations:** Holloway Road, Highbury and Islington, Caledonian Road



Type of School:	Mixed Voluntary-aided Catholic
Age range:	3 - 11
Total number of places available at the school (YR-Y6):	420
Number of places available in reception class:	60
School start and finish times:	8.45am - 3.30pm
Accessibility:	Ramp access and accessible toilets
DfE Code:	206/3384
<a href="#">Sacred Heart Catholic Primary School admissions criteria</a>	
<a href="#">Sacred Heart Catholic Primary School Supplementary Information Form (SIF)</a>	
Distance of last pupil admitted under the final criterion (distance) in Sept 2025:	Does not apply
<a href="#">Calculate your home to school distance</a>	
<b>Website:</b> <b>Contact name for admission enquiries:</b> <b>Email:</b> <b>Telephone:</b> <b>X (Twitter):</b>	<a href="http://www.sacredheart.islington.sch.uk">www.sacredheart.islington.sch.uk</a> Mrs Sharon Harney <a href="mailto:admin@sacredheart.islington.sch.uk">admin@sacredheart.islington.sch.uk</a> 020 7607 3407 <a href="https://twitter.com/SacredHeart_CS">@SacredHeart_CS</a>
Does the school have two-year-old provision?	No
Does the school have a nursery class?	Yes
Does the school have a breakfast club?	Yes
Does the school have any after-school childcare?	Yes (after-school club)
Does the school have a uniform?	Yes
Visiting dates:	Please call the school office to arrange a visit

# St Andrew's (Barnsbury) CE Primary School

## Fact file

**Executive Head:** Tonnie Reid

**Head of School:** Richard Smith

**Address:** Matilda Street, N1 0LB

**St Andrew's (Barnsbury) CE Primary School map**

**Bus routes:** 17, 91, 153, 259, 274

**Nearest stations:** Caledonian Road and Barnsbury (Overground)



Type of School:	Mixed Voluntary-aided Church of England
Age range:	4 - 11 years
Total number of places available at the school (YR-Y6):	210
Number of places available in reception class:	30
School start and finish times:	8.55am – 3.25pm (Reception) 8.55am – 3.30pm (All other year groups)
Accessibility:	Wheelchair access, accessible toilets
DfE Code:	206/3606
<a href="#">St Andrew's (Barnsbury) CE Primary School admissions criteria</a>	
<a href="#">St Andrew's (Barnsbury) CE Primary Supplementary Information Form (SIF)</a>	
Distance of last pupil admitted under the final criterion (distance) in Sept 2025:	Does not apply
<a href="#">Calculate your home to school distance</a>	
<b>Website:</b> <b>Contact name for admission enquiries:</b> <b>Email:</b> <b>Telephone:</b>	<a href="http://www.standrews.islington.sch.uk">www.standrews.islington.sch.uk</a> Keeley Doolan <a href="mailto:admin@standrews.islington.sch.uk">admin@standrews.islington.sch.uk</a> 020 7837 4049
Does the school have two-year-old provision?	No
Does the school have a nursery class?	No
Does the school have a breakfast club?	Yes
Does the school have any after-school childcare?	Yes
Does the school have a uniform?	Yes
Visiting dates:	Each Monday at 11am. Please call or email the school office to book.

# St Joan of Arc Catholic Primary School

## Fact file

**Head Teacher:** Clare Campbell

**Address:** Northolme Road, N5 2UX

**St Joan of Arc Catholic Primary School**  
**map**

**Bus routes:** 4, 19, 236

**Nearest stations:** Arsenal or Highbury and Islington



Type of School:	Mixed Voluntary-aided Catholic
Age range:	3 - 11
Total number of places available at the school (YR-Y6):	420
Number of places available in reception class:	60
School start and finish times:	8.30am - 3.00pm
Accessibility:	Ramp access, accessible toilets
DfE Code:	206/3631
<a href="#">St Joan of Arc Catholic Primary School admissions criteria</a>	
<a href="#">St Joan of Arc Catholic Primary School Supplementary Information Form (SIF)</a>	
Distance of last pupil admitted under the final criterion (distance) in Sept 2025:	0.121 miles
<a href="#">Calculate your home to school distance</a>	
<b>Website:</b> <b>Contact name for admission enquiries:</b> <b>Email:</b> <b>Telephone:</b>	<a href="http://www.st-joanofarc.islington.sch.uk">www.st-joanofarc.islington.sch.uk</a> Barbara van Kan <a href="mailto:admissions@st-joanofarc.islington.sch.uk">admissions@st-joanofarc.islington.sch.uk</a> 020 7226 3920
Does the school have two-year-old provision?	No
Does the school have a nursery class?	Yes
Does the school have a breakfast club?	No
Does the school have any after-school childcare?	Yes
Does the school have a uniform?	Yes
Visiting dates:	Please see school website for dates and times

# St John Evangelist Primary School

## Fact file

**Head Teacher:** Stephanie Maker

**Address:** Duncan Street, N1 8BL

**St John Evangelist Primary School map**

**Bus routes:** 4, 19, 30, 38, 43, 56, 73, 153, 205, 214, 274, 341, 394, 476

**Nearest station:** Angel



Type of School:	Mixed Voluntary-aided Catholic
Age range:	3 - 11
Total number of places available at the school (YR-Y6):	280
Number of places available in reception class:	30
School start and finish times:	8.45am (soft start) 9.00am (registration) - 3.15pm
Accessibility:	Accessible toilets
DfE Code:	206/3456
<a href="#">St John Evangelist Primary School admissions criteria</a>	
<a href="#">St John Evangelist Primary School Supplementary Information Form (SIF)</a>	
Distance of last pupil admitted under the final criterion (distance) in Sept 2025:	Does not apply
<a href="#">Calculate your home to school distance</a>	
<b>Website:</b> <b>Contact name for admission enquiries:</b> <b>Email:</b> <b>Tel:</b>	<a href="http://www.stjohnevangelist.co.uk">www.stjohnevangelist.co.uk</a> Tina Roseman <a href="mailto:office@stjohnevangelist.islington.sch.uk">office@stjohnevangelist.islington.sch.uk</a> 020 7226 1314
Does the school have two-year-old provision?	No
Does the school have a nursery class?	Yes
Does the school have a breakfast club?	Yes
Does the school have any after-school childcare?	Yes
Does the school have a uniform?	Yes
Visiting dates:	Please contact the school to arrange a tour or visit

# St John's Highbury Vale Primary School

## Fact file

**Executive Head Teacher:** Tonnie Read

**Head of School:** Hasina Khan

**Address:** Conewood Street, N5 1DL

**St John's Highbury Vale Primary School map**

**Bus routes:** 4, 19, 236

**Nearest station:** Arsenal



Type of School:	Mixed Voluntary-aided Church of England
Age range:	4 - 11
Total number of places available at the school (YR-Y6):	210
Number of places available in reception class:	30
School start and finish times:	8.55am - 3.30pm
Accessibility:	Ramp access, accessible toilets
DfE Code:	206/3471
<a href="#">St John's Highbury Vale Primary School admissions criteria</a>	
<a href="#">St John's Highbury Vale Supplementary Information Form (SIF)</a>	
Distance of last pupil admitted under the final criterion (distance) in Sept 2025:	0.309 miles
<a href="#">Calculate your home to school distance</a>	
<b>Website:</b> <b>Contact name for admission enquiries:</b> <b>Email:</b> <b>Telephone:</b>	<a href="http://www.stjhv.islington.sch.uk">www.stjhv.islington.sch.uk</a> Clare Thomson <a href="mailto:admin@stjhv.islington.sch.uk">admin@stjhv.islington.sch.uk</a> 020 7226 4906
Does the school have two-year-old provision?	No
Does the school have a nursery class?	No
Does the school have a breakfast club?	Yes (Monday – Friday)
Does the school have any after-school childcare?	Yes (3.30 – 6.00pm)
Does the school have a uniform?	Yes
Visiting dates:	Please contact the school to arrange a tour or visit



# St John's Upper Holloway CE Primary School

## Fact file

**Head Teacher:** Nick Turpin

**Address:** Pemberton Gardens, N19 5RR

**St John's Upper Holloway CE Primary School map**

**Bus routes:** 17, 43, 134, 263, 271, 390

**Nearest stations:** Upper Holloway overground and Archway underground



Type of School:	Mixed Voluntary-aided Church of England
Age range:	2 - 11
Total number of places available at the school (YR-Y6):	210
Number of places available in reception class:	30
School start and finish times:	9.00am - 3.30pm
Accessibility:	Fully accessible building
DfE Code:	206/3465
<a href="#">St John's Upper Holloway CE Primary School admissions criteria</a>	
<a href="#">St John's Upper Holloway CE Primary School Supplementary Information Form (SIF)</a>	
Distance of last pupil admitted under the final criterion (distance) in Sept 2025:	Does not apply
<a href="#">Calculate your home to school distance</a>	
<b>Website:</b> <b>Contact name for admission enquiries:</b> <b>Email:</b> <b>Telephone:</b>	<a href="http://www.stjohnsupperholloway.co.uk">www.stjohnsupperholloway.co.uk</a> Tara Kubilay <a href="mailto:info@st-johnsholloway.islington.sch.uk">info@st-johnsholloway.islington.sch.uk</a> 020 7272 2780
Does the school have two-year-old provision?	Yes
Does the school have a nursery class?	Yes
Does the school have a breakfast club?	Yes
Does the school have any after-school childcare?	Yes
Does the school have a uniform?	Yes
Visiting dates:	Please contact the school to arrange a tour or visit



# St Joseph's Catholic Primary School and Nursery

## Fact file

**Executive Head Teacher:** Clare McFlynn

**Head of School:** Angela Noronha

**Address:** Highgate Hill, N19 5NE

**St Joseph's Catholic Primary School and Nursery map**

**Bus routes:** 43, 134, 210, 271, W5

**Nearest station:** Archway



Type of School:	Mixed Voluntary-aided Catholic
Age range:	2 - 11
Total number of places available at the school (YR-Y6):	420
Number of places available in reception class:	60
School start and finish times:	8.50am (soft start from 8.35am) - 3.20pm
Accessibility:	Wheelchair access to ground floor and accessible toilets, lift access
DfE Code:	206/3483
<a href="#">St Joseph's Catholic Primary School and Nursery admissions criteria</a>	
<a href="#">St Joseph's Catholic Primary School and Nursery Supplementary Information Form (SIF)</a>	
Last pupil admitted under distance criterion in Sept 2025:	2.736 miles
<a href="#">Calculate your home to school distance</a>	
<b>Website:</b> <b>Contact name for admission enquiries:</b> <b>Email:</b> <b>Telephone:</b> <b>X (Twitter):</b>	<a href="http://www.st-josephs.islington.sch.uk">www.st-josephs.islington.sch.uk</a> Louise Palmer <a href="mailto:office@st-josephs.islington.sch.uk">office@st-josephs.islington.sch.uk</a> 020 7272 1270 <a href="https://twitter.com/sthighgate">@sthighgate</a>
Does the school have two-year-old provision?	Yes
Does the school have a nursery class?	Yes
Does the school have a breakfast club?	Yes (from 7.30am)
Does the school have any after-school childcare?	Yes (until 6.00pm)
Does the school have a uniform?	Yes
Visiting dates:	Every morning 9:30am term-time. Please contact the school to arrange a tour.

# St Luke's CE Primary School

## Fact file

**Head Teacher:** Tom O'Donnell

**Address:** Radnor Street, EC1V 3SJ

**St Luke's CE Primary School map**

**Bus routes:** 21, 43, 55, 76, 135, 141, 205, 214, 243, 271, 394

**Nearest station:** Old Street



Type of School:	Mixed Voluntary-aided Church of England
Age range:	3 - 11
Total number of places available at the school (YR-Y6):	210
Number of places available in reception class:	30
School start and finish times:	8.50 am (soft start) - 3.30pm
Accessibility:	Wheelchair access
DfE Code:	206/3495
<a href="#">St Luke's CE Primary School admissions criteria</a>	
<a href="#">St Luke's CE Primary School Supplementary Information Form (SIF)</a>	
Distance of last pupil admitted under the final criterion (distance) in Sept 2025:	Does not apply
<a href="#">Calculate your home to school distance</a>	
<b>Website:</b> <b>Contact name for admission enquiries:</b> <b>Email:</b> <b>Telephone:</b> <b>X (Twitter):</b>	<a href="http://www.st-lukesislington.co.uk">www.st-lukesislington.co.uk</a> Angela Major <a href="mailto:admin@st-lukes.islington.sch.uk">admin@st-lukes.islington.sch.uk</a> 020 7253 3880 <a href="https://twitter.com/stlukesoldst">@stlukesoldst</a>
Does the school have two-year-old provision?	No
Does the school have a nursery class?	Yes
Does the school have a breakfast club?	Yes
Does the school have any after-school childcare?	Yes
Does the school have a uniform?	Yes
Visiting dates:	Wednesdays at 9:15am Please call the school to book an appointment

# St Mark's CE Early Years and Primary School

## Fact file

**Head Teacher:** Martha Braithwaite

**Address:** Sussex Way, N19 4JF

**St Mark's CE Early Years and Primary School**  
**map**

**Bus routes:** 17, 43, 91, 271

**Nearest stations:** Finsbury Park (Tube) Archway or Upper Holloway



Type of School:	Mixed Voluntary-aided Church of England
Age range:	2 - 11
Total number of places available at the school (YR-Y6):	210
Number of places available in reception class:	30
School start and finish times:	8.55am - 3.30pm
Accessibility:	Second floor of main school building not accessible for wheelchair users
DfE Code:	206/3501
<a href="#">St Mark's CE Early Years and Primary School admissions criteria</a>	
<a href="#">St Mark's CE Early Years and Primary School Supplementary Information Form (SIF)</a>	
Distance of last pupil admitted under the final criterion (distance) in Sept 2025:	0.383 miles
<a href="#">Calculate your home to school distance</a>	
<b>Website:</b> <b>Contact name for admission enquiries:</b> <b>Email:</b> <b>Telephone:</b>	<a href="http://www.st-marks.islington.sch.uk">www.st-marks.islington.sch.uk</a> Karen Kean <a href="mailto:admin@st-marks.islington.sch.uk">admin@st-marks.islington.sch.uk</a> 020 7272 5967
Does the school have two-year-old provision?	Yes
Does the school have a nursery class?	Yes
Does the school have a breakfast club?	Yes
Does the school have any after-school childcare?	Yes (age 5 and above)
Does the school have a uniform?	Yes
Visiting dates:	Tuesday: 30 September 2025, 14 October 2025, 11 November 2025, 2 December 2025 Thursday: 8 January 2026 Please call the school to book a place

# St Mary Magdalene Academy

## Fact file

**Academy Head Teacher:** Vicky Linsley

**Head of Primary:** Kate Dingle

**Address:** Liverpool Road, N7 8PG

**St Mary Magdalene Academy map**

**Bus routes:** 17, 19, 30, 43, 91, 153, 259, 271, 274, 277

**Nearest stations:** Caledonian Road or Highbury and Islington



Type of School:	Mixed Church of England Academy
Age range:	4 - 19
Total number of places available at the school (YR-Y6):	210
Number of places available in reception class:	30
School start and finish times:	8.45am - 3.20pm (8.30am soft start)
Accessibility:	Fully accessible building
DfE Code:	206/6905
<a href="#">St Mary Magdalene Academy admissions criteria</a>	
<a href="#">St Mary Magdalene Academy Supplementary Information Form (SIF)</a>	
Distance of last pupil admitted under the final criterion (distance) in Sept 2025:	0.316 miles
<a href="#">Calculate your home to school distance</a>	
<b>Website:</b> <b>Contact name for admission enquiries:</b> <b>Email:</b> <b>Tel:</b> <b>X (Twitter):</b>	<a href="http://www.smmacademy.org">www.smmacademy.org</a> Birte Rohloff <a href="mailto:admissionsregistrar@smmacademy.org">admissionsregistrar@smmacademy.org</a> 020 7697 0123 <a href="https://twitter.com/StMM_Academy">@StMM_Academy</a>
Does the school have two-year-old provision?	No
Does the school have a nursery class?	No
Does the school have a breakfast club?	Yes
Does the school have any after-school childcare?	Yes
Does the school have a uniform?	Yes
Visiting dates:	Please contact school for visiting dates and times

# St Mary's Islington CE Primary School

## Fact file

**Head Teacher:** Anthony David

**Address:** Fowler Road, N1 2EP

**St Mary's Islington CE Primary School map**

**Bus routes:** 4, 19, 30, 38, 43, 56, 73

**Nearest stations:** Essex Road, Highbury and Islington or Angel (Overground)



Type of School:	Mixed Voluntary-aided Church of England
Age range:	4 - 11
Total number of places available at the school (YR-Y6):	210
Number of places available in reception class:	30
School start and finish times:	8.50am - 3.30pm
Accessibility:	Lift and accessible toilets
DfE Code:	206/3527
<a href="#">St Mary's Islington CE Primary School admissions criteria</a>	
<a href="#">St Mary's Islington CE Primary School Supplementary Information Form (SIF)</a>	
Distance of last pupil admitted under the final criterion (distance) in Sept 2025:	Does not apply
<a href="#">Calculate your home to school distance</a>	
<b>Website:</b> <b>Contact name for admission enquiries:</b> <b>Email:</b> <b>Telephone:</b>	<a href="http://www.stmarys.islington.sch.uk">www.stmarys.islington.sch.uk</a> Assitan Sidibe <a href="mailto:school@stmarys.islington.sch.uk">school@stmarys.islington.sch.uk</a> 020 7359 1870
Does the school have two-year-old provision?	No
Does the school have a nursery class?	No
Does the school have a breakfast club?	Yes (age 5 and above)
Does the school have any after-school childcare?	Yes (age 5 and above)
Does the school have a uniform?	Yes
Visiting dates:	Please contact the school for visiting dates

# St Peter and St Paul Catholic Primary School

## Fact file

**Head Teacher:** Tracey Peters

**Address:** Compton Street, EC1V 0EU

**St Peter and St Paul Catholic Primary School map**

**Bus routes:** 4, 56, 153

**Nearest stations:** Barbican, Angel, Old Street or Farringdon



Type of School:	Mixed Voluntary-aided Catholic
Age range:	2 - 11
Total number of places available at the school (YR-Y6):	210
Number of places available in reception class:	30
School start and finish times:	8.30-8.45am (soft start) - 3.00pm
Accessibility:	Accessible toilet on ground floor
DfE Code:	206/3575
<a href="#">St Peter and St Paul Catholic Primary School admissions criteria</a>	
<a href="#">St Peter and St Paul Catholic Primary School Supplementary Information Form (SIF)</a>	
Distance of last pupil admitted under the final criterion (distance) in Sept 2025:	0.151 miles
<a href="#">Calculate your home to school distance</a>	
<b>Website:</b> <b>Contact name for admission enquiries:</b> <b>Email:</b> <b>Telephone:</b> <b>X (Twitter):</b>	<a href="http://www.stpetersandstpauls.islington.sch.uk">www.stpetersandstpauls.islington.sch.uk</a> Maria Bennett or Katie Hankins <a href="mailto:admissions@stpetersandstpauls.islington.sch.uk">admissions@stpetersandstpauls.islington.sch.uk</a> 020 7253 0839 <a href="https://twitter.com/Ss_Peter_Pauls">@Ss_Peter_Pauls</a>
Does the school have two-year-old provision?	Yes
Does the school have a nursery class?	Yes
Does the school have a breakfast club?	Yes
Does the school have any after-school childcare?	Yes
Does the school have a uniform?	Yes
Visiting dates:	Every day at 9.30am or contact the school to arrange an alternative time



# The New North Academy

## Fact file

**Head Teacher:** Ffion Evans

**Address:** 32 Popham Road, N1 8SJ

**The New North Academy map**

**Bus routes:** 21, 38, 56, 73, 341, 476

**Nearest stations:** Highbury and Islington, Angel (Tube) or Essex Road (Overground)



Type of School:	Mixed Academy
Age range:	3 - 11
Total number of places available at the school (YR-Y6):	210
Number of places available in reception class:	30
School start and finish times:	Soft start: 8.45am-8.55am Finish: 3.15pm
Accessibility:	Disabled parking, wheelchair access, automatic doors, lift, accessible toilets, adoptions for hearing and visual impairment, refuge points, visual and audible fire alarm system
DfE Code:	206/3644
<a href="#">The New North Academy admissions criteria</a>	
Last pupil admitted under distance criterion in Sept 2025:	Does not apply
<a href="#">Calculate your home to school distance</a>	
<b>Website:</b> <b>Contact name for admission enquiries:</b> <b>Email:</b> <b>Telephone:</b> <b>X (Twitter):</b>	<a href="http://www.newnorthacademy.com">www.newnorthacademy.com</a> School Office <a href="mailto:info@newnorth.academy">info@newnorth.academy</a> 020 7704 3900 <a href="https://twitter.com/NewNorthAcademy">@NewNorthAcademy</a>
Does the school have two-year-old provision?	No
Does the school have a nursery class?	No
Does the school have a breakfast club?	No
Does the school have any after-school childcare?	No
Does the school have a uniform?	Yes
Visiting dates:	Please contact the school office to arrange a tour/visit

# Thornhill Primary School

## Fact file

**Executive Head Teacher:** Jenny Lewis

**Head Teacher:** Paul Robinson

**Address:** Thornhill Road, N1 1HX

**Thornhill Primary School map**

**Bus routes:** 4, 19, 30, 43, 153, 274, 812

**Nearest stations:** Caledonian Road and Barnsbury overground, Angel, Highbury and Islington



Type of School:	Mixed Community
Age range:	3 - 11
Total number of places available at the school (YR-Y6):	420
Number of places available in reception class:	60
School start and finish times:	8.50am - 3.20pm
Accessibility:	Wheelchair access, lift, accessible toilets
DfE Code:	206/2596
<a href="#">Thornhill Primary School admissions criteria</a>	
Last pupil admitted under distance criterion in Sept 2025:	0.364 miles
<a href="#">Calculate your home to school distance</a>	
<b>Website:</b> <b>Contact name for admission enquiries:</b> <b>Email:</b> <b>Tel:</b> <b>Instagram:</b>	<a href="http://www.thornhill.islington.sch.uk">www.thornhill.islington.sch.uk</a> Elizabeth Rakic or Dionne Smyth <a href="mailto:admissions@thornhill.islington.sch.uk">admissions@thornhill.islington.sch.uk</a> 020 7607 4162 <a href="https://www.instagram.com/thornhillschool">@thornhillschool</a>
Does the school have two-year-old provision?	No
Does the school have a nursery class?	Yes
Does the school have a breakfast club?	Yes (from 8.00am)
Does the school have any after-school childcare?	Yes (until 6.00pm)
Does the school have a uniform?	Yes
Visiting dates:	Please email the school to arrange a tour/visit: <a href="mailto:Thornhill@thornhill.islington.sch.uk">Thornhill@thornhill.islington.sch.uk</a>

# Tufnell Park Primary School

## Fact file

**Head Teacher:** Martin Scarborough

**Address:** Carleton Road, N7 0HJ

**Tufnell Park Primary School map**

**Bus routes:** 4, 29, 253, 390, 393

**Nearest stations:** Tufnell Park, Caledonian Road or Kentish Town (Overground)



Type of School:	Mixed Community
Age range:	2 - 11
Total number of places available at the school (YR-Y6):	450
Number of places available in reception class:	60
School start and finish times:	8.55am - 3.30pm
Accessibility:	Fully accessible
DfE Code:	206/2803
<a href="#">Tufnell Park Primary School admissions criteria</a>	
Last pupil admitted under distance criterion in Sept 2025:	0.522 miles
<a href="#">Calculate your home to school distance</a>	
<b>Website:</b> <b>Contact name for admission enquiries:</b> <b>Email:</b> <b>Telephone:</b> <b>X (Twitter):</b>	<a href="http://www.tufnellpark.islington.sch.uk">www.tufnellpark.islington.sch.uk</a> Renata Flavell <a href="mailto:admin@tufnellpark.islington.sch.uk">admin@tufnellpark.islington.sch.uk</a> 020 7607 4852 <a href="https://twitter.com/TufnellS">@TufnellS</a>
Does the school have two-year-old provision?	Yes
Does the school have a nursery class?	Yes
Does the school have a breakfast club?	Yes from 8.00am
Does the school have any after-school childcare?	Yes until 6.00pm
Does the school have a uniform?	Yes
Visiting dates:	Tours with the headteacher are available most Fridays throughout the Autumn term, between 10:30am and 12pm. Please contact the office to book a place.

# Vittoria Primary School

## Fact file

**Head Teacher:** Matthew Akinnayajo

**Address:** Treaty Street, N1 0WF

**Vittoria Primary School map**

**Bus routes:** 17, 91, 153, 259, 274, 390

**Nearest stations:** King's Cross



Type of School:	Mixed Community
Age range:	3 - 11
Total number of places available at the school (YR-Y6):	240
Number of places available in reception class:	30
School start and finish times:	8.40am - 3.15pm
Accessibility:	Ground floor is fully accessible
DfE Code:	206/2624
<a href="#">Vittoria Primary School admissions criteria</a>	
Last pupil admitted under distance criterion in Sept 2025:	Does not apply
<a href="#">Calculate your home to school distance</a>	
<b>Website:</b> <b>Contact name for admission enquiries:</b> <b>Email:</b> <b>Telephone:</b> <b>X (Twitter):</b>	<a href="http://www.vittoria.islington.sch.uk">www.vittoria.islington.sch.uk</a> Britta Eke <a href="mailto:office@vittoria.islington.sch.uk">office@vittoria.islington.sch.uk</a> 020 7837 5597 <a href="https://twitter.com/VittoriaPrimary">@VittoriaPrimary</a>
Does the school have two-year-old provision?	No
Does the school have a nursery class?	Yes
Does the school have a breakfast club?	Yes
Does the school have any after-school childcare?	Yes
Does the school have a uniform?	Yes
Visiting dates:	Please contact the school office to arrange a tour/visit

# Whitehall Park School

## Fact file

**Head Teacher:** Sally Reay

**Address:** 106 Hornsey Lane, N6 5EP

**Whitehall Park School map**

**Bus routes:** 41, 43, 91, 134, 210, 234, 263, W5

**Nearest stations:** Archway Station, Highgate Station or Crouch Hill Station (Overground)



Type of School:	Mixed Free School
Age range:	3 - 11
Total number of places available at the school (YR-Y6):	210
Number of places available in reception class:	30
School start and finish times:	8.55am - 3.30pm
Accessibility:	Fully accessible building
DfE Code:	206/2000
<a href="#">Whitehall Park School admissions criteria</a>	
Last pupil admitted under distance criterion in Sept 2025:	Does not apply
<a href="#">Calculate your home to school distance</a>	
<b>Website:</b> <b>Contact name for admission enquiries:</b> <b>Email:</b> <b>Telephone:</b>	<a href="http://www.whitehallparkschool.co.uk">www.whitehallparkschool.co.uk</a> Sally Reay - Headteacher <a href="mailto:office@whitehallparkschool.org.uk">office@whitehallparkschool.org.uk</a> 020 7561 0113
Does the school have two-year-old provision?	No
Does the school have a nursery class?	Yes, 26 places (flexible slots)
Does the school have a breakfast club?	Yes, from 7.45am
Does the school have any after-school childcare?	Yes
Does the school have a uniform?	Yes
Visiting dates:	For visiting dates, please click here: <a href="http://www.whitehallparkschool.co.uk/Book-a-school-tour/">www.whitehallparkschool.co.uk/Book-a-school-tour/</a>

# William Tyndale Primary School

## Fact file

**Head Teacher:** Sophie Gavalda

**Address:** Upper Street, N1 2GG

**William Tyndale Primary School map**

**Bus routes:** 4, 19, 30, 43

**Nearest station:** Highbury and Islington



Type of School:	Mixed Academy
Age range:	3 - 11
Total number of places available at the school (YR-Y6):	420
Number of places available in reception class:	60
School start and finish times:	8.55am - 3.30pm
Accessibility:	Fully accessible (wheelchair access and accessible toilets on every floor, lift and ramps)
DfE Code:	206/2643
<a href="#">William Tyndale Primary School admissions criteria</a>	
Last pupil admitted under distance criterion in Sept 2025:	0.291 miles
<a href="#">Calculate your home to school distance</a>	
<b>Website:</b> <b>Contact name for admission enquiries:</b> <b>Email:</b> <b>Telephone:</b> <b>X (Twitter):</b>	<a href="http://www.williamtyndale-islington.co.uk">www.williamtyndale-islington.co.uk</a> Penny El-Nemer <a href="mailto:penny@williamtyndale.islington.sch.uk">penny@williamtyndale.islington.sch.uk</a> 020 7226 6803 <a href="https://twitter.com/WilliamTyndalePrimary">@WilliamTyndalePrimary</a>
Does the school have two-year-old provision?	No
Does the school have a nursery class?	Yes
Does the school have a breakfast club?	Yes
Does the school have any after-school childcare?	Yes
Does the school have a uniform?	No
Visiting dates:	All tours start at 9.15am: Tuesday 16 September 2025 Thursday 6 November 2025 Thursday 8 January 2026 Wednesday 4 March 2026 Tuesday 2 June 2026



# Winton Primary School

## Fact file

**Head Teacher:** Greg Grey

**Address:** Killick Street, N1 9AZ

**Winton Primary School map**

**Bus routes:** 17, 19, 30, 73, 91, 214, 259, 476

**Nearest stations:** King's Cross, Caledonian Road and St Pancras International



Type of School:	Mixed Community
Age range:	2 - 11
Total number of places available at the school (YR-Y6):	210
Number of places available in reception class:	30
School start and finish times:	8.55am - 3.30pm
Accessibility:	Accessible toilets, lift in sports hall
DfE Code:	206/2646
<a href="#">Winton Primary School admissions criteria</a>	
Last pupil admitted under distance criterion in Sept 2025:	0.329 miles
<a href="#">Calculate your home to school distance</a>	
<b>Website:</b> <b>Contact name for admission enquiries:</b> <b>Email:</b> <b>Telephone:</b>	<a href="http://www.lqps.co.uk">www.lqps.co.uk</a> Chantal Williams <a href="mailto:admin.winton@lqps.co.uk">admin.winton@lqps.co.uk</a> 020 7837 6096
Does the school have two-year-old provision?	Yes
Does the school have a nursery class?	Yes
Does the school have a breakfast club?	Yes
Does the school have any after-school childcare?	Yes ('Walking Bus' to a nearby play centre)
Does the school have a uniform?	Yes (navy – non branded)
Visiting dates:	Reception Open Day: Please check the school website In-year admission appointment: Email the school

# Yerbury Primary School

## Fact file

**Head Teacher:** Miss Cassie Moss

**Address:** Foxham Road, N19 4RR

**Yerbury Primary School map**

**Bus routes:** 4, 43, 263

**Nearest stations:** Upper Holloway, Tufnell Park or Archway



Type of School:	Mixed Community
Age range:	3 - 11
Total number of places available at the school (YR-Y6):	420
Number of places available in reception class:	60
School start and finish times:	9.00am - 3.30pm
Accessibility:	Wheelchair access to main reception, accessible toilets
DfE Code:	206/2666
<a href="#">Yerbury Primary School admissions criteria</a>	
Last pupil admitted under distance criterion in Sept 2025:	0.277 miles
<a href="#">Calculate your home to school distance</a>	
<b>Website:</b> <b>Contact name for admission enquiries:</b> <b>Email:</b> <b>Telephone:</b>	<a href="http://www.yerbury.islington.sch.uk">www.yerbury.islington.sch.uk</a> Louise Brown <a href="mailto:admin@yerbury.islington.sch.uk">admin@yerbury.islington.sch.uk</a> 020 7272 6580
Does the school have two-year-old provision?	No
Does the school have a nursery class?	Yes
Does the school have a breakfast club?	Yes
Does the school have any after-school childcare?	Yes (Highbury Roundhouse)
Does the school have a uniform?	No
Visiting dates:	Please visit the <a href="#">school website admissions</a> page to book onto a school tour.

# Section 5: Useful information and contacts



# FIS, Bright Start and Free School Meals

## **Family Information Service (FIS)**

Islington FIS gives free, impartial information, advice and guidance about services for children, young people and families in Islington. You can use the FIS to find services which will help you in your family life, including childcare, free early learning, employment and benefits advice, support for disabled children and fun things to do in Islington.

[Find Your Islington | Islington FIS, Family Information Service](#)

E. [fis@islington.gov.uk](mailto:fis@islington.gov.uk) or T. 020 7527 5959.

## **The Right Start with Bright Start!**

Bright Start offers a range of activities and services for families from pregnancy to a child's fifth birthday, in friendly, safe and welcoming venues across Islington. Bright Start incorporates our conception to age two Start for Life offer and is part of our Family Hubs 0-25 programme. As well as childcare and early education, child and family health services, family and parenting support, Bright Start provides stay and play sessions and fun activities, inside and outdoors, where parents-to-be, parents and children can meet other local families.

## **Where can I find Bright Start Islington?**

You can drop into your local children's centre or family hub to find services and activities. You can access some services such as health visiting and family support in your home. Other Bright Start services and activities are available across the borough in health centres, libraries, wildlife gardens and community centres.

You can call Bright Start on 020 7527 8376 or [Find Children's Centres and Bright Start Services](#)

You can also visit our [Start for Life](#) pages for information to help you in the first 1,001 days of your baby's life, from conception to age two.

## **Free School Meals**

The Mayor of London has committed to a further year of the provision of Free School Meals for all pupils in KS2, with the DfE continuing to fund all pupils in KS1.

To take advantage of these schemes you will need to complete the online [Free School Meals registration form](#).

For every child who meets the National Free School Meals eligibility criteria, the school will receive an additional £1,515. This helps schools to provide valuable support such as extra tuition, learning assistants and after-school clubs.

Find out more by emailing [FreeSchoolMeal@islington.gov.uk](mailto:FreeSchoolMeal@islington.gov.uk)

---

## Additional educational needs

Our primary schools are inclusive and welcoming to all children. Whatever your child's needs they will be supported to thrive and fully participate in school life.

We believe every child deserves access to a rich, diverse and ambitious curriculum – one that is tailored to meet their individual strengths, interests and needs.

For more able children, our schools offer a wide range of activities and challenges to stretch their thinking and nurture their talents.

For children with special educational needs (SEND), schools provide support to help them become confident, independent learners. Their achievements are recognised and celebrated as valued members of the school community.

For children with English as an additional language, schools ensure that their language development needs are met with high quality language-rich classroom practice, effective induction systems and targeted interventions. This work is supported by trained specialist teachers, teaching assistants and bilingual parent support assistants.

All schools are committed to accessibility, ensuring that physical environments, learning materials, and communication methods are inclusive and adapted to meet a wide range of needs.

The best way to find out if a particular school would suit your child is to visit the school and see for yourself. Why not book onto an open day or tour of the school? Details are included in the fact file for each school.

For more information, please visit [Islington's SEND Local Offer](#) or contact Islington SENDIAS on telephone number **020 3031 6651** or email [IslingtonSENDIASS@ldnlondon.org](mailto:IslingtonSENDIASS@ldnlondon.org) for independent SEND support and advice.



# Attendance matters: every day counts!

## Time for school

**Good attendance and punctuality give your child best chance to succeed – and the evidence speaks for itself!**

In 2024...

- Pupils who achieved the **higher standard** in reading, writing and maths at the end of KS2 had an average annual attendance percentage of **96.6%**
- Pupils who achieved the **expected standard** in reading, writing and maths at the end of KS2 had an average annual attendance percentage of **95.3%**
- Pupils who **did not achieve** the expected standard in reading, writing and maths at the end of KS2 had an average annual attendance percentage of **91.2%**.

Even being just 10 minutes late each day adds up to **32 hours of lost learning** over the year - that's more than **6 full school days**.

**Every day really does count.**



## A borough-wide approach

Islington's 'community of schools' is committed to securing good attendance and punctuality for your child. This means that term-time holidays will not be authorised (unless there are exceptional circumstances), and every absence will be followed up with you. Schools will work with you to improve your child's attendance, but ultimately the legal duty to secure regular school attendance sits with parents. In some cases, where attendance fails to improve, this may result in penalty notices (fines) or prosecution.



## Getting to School

Islington has a great network of bus, tube and rail links making it easy to get to any of Islington's schools. Find out more on the [TfL website](#).

### Sustainable travel

Islington Council is working with schools to promote safer, healthier and more environmentally friendly ways to travel. Our aims are to:

- make cycling and walking safer and more attractive
- increase the number of school pupils using local bus services
- reduce traffic congestion around schools
- develop partnerships with schools, their communities and other organisations
- promote the development of school travel plans
- promote safety through education and training
- promote the health benefits of walking and cycling
- promote sustainable travel choices by ensuring any new schools are accessible by walking, cycling and public transport
- raise awareness of School Streets.

**Cycling to school**, work and for daily journeys is a fun, quick and cheap way to get around as well as being good for the environment and for physical and mental health.

**Walking** is a great way to keep fit, help the environment and have fun. Why not start or join a [walking bus](#) to your child's school? Explore the [Islington Footways Map](#) or Islington's network of [School Streets](#) to find safe and enjoyable streets around your school.

### TfL Travel for Life

Islington Council supports walking, cycling and wheeling in school communities through the creation of school travel plans using the TfL [Travel for Life](#) platform. By running Travel for Life activities, schools can gain DfT-recognised accreditation and support their community to use more active modes of transport. A school travel plan looks at the journeys pupils make to get to and from school and why certain travel and transport options are chosen. With this information we work with schools to find practical solutions to encourage safe, healthy and environmentally friendly travel. For more information on school travel plans, please email [schooltravelplans@islington.gov.uk](mailto:schooltravelplans@islington.gov.uk) or see the [school travel plans webpage](#).

### Bikeability

Islington Council offers free Bikeability cycle training to all our schools. [Balance courses](#) are offered to Reception to Year 2 children. [Level 1](#) (off road) to Years 3 and 4 and [Level 2](#) (on road) is offered to Years 5 and 6. Helmets and bikes are provided. Additionally, beginner sessions are run in the school holidays for those children looking to learn to ride and develop their control skills. Please visit our [cycle training booking website](#) for more information or email [iyke.gentles@islington.gov.uk](mailto:iyke.gentles@islington.gov.uk).

### **Adult Cycle Skills**

Parents, carers and school staff who work in Islington can get [free cycle skills](#) sessions to either learn to ride or become more confident on the roads. Bikes can be provided, and sessions arranged to a time that suits you.

### **Dr Bike Sessions and Bike Maintenance Courses**

At a [Dr Bike Session](#), residents are offered free bike checks by our trained mechanics at outside the Town Hall on the third Tuesday of every month.

Parents eager to upskill can take this a step further by attending our [free maintenance courses](#) to learn more about how they can keep their family's cycles safe on the road.

# Glossary

## Academies

Academies are independently managed, all-ability schools. The governing body sets its own admissions criteria, in line with the statutes laid down in the School Admissions Code.

## Admission Criteria (or Oversubscription Criteria)

The rules by which applications will be prioritised for admission when there are more applicants than places available. These rules must be published on the school's website.

## Admission Authority

The body responsible for deciding the admission criteria and for allocating school places. In the case of community schools, this is the local authority and in the case of voluntary aided schools, Free Schools and Academies it is the school's governing body.

## Children looked after/Previously looked after (CLA /PLAC)

A looked after child or a child who was previously looked after but immediately after being looked after became subject to an adoption, child arrangements, or special guardianship order including those who appear [to the admission authority] to have been in state care outside of England and ceased to be in state care as a result of being adopted.

A looked after child is a child who is (a) in the care of a local authority, or (b) being provided with accommodation by a local authority in the exercise of their social services functions (see the definition in Section 22(1) of the Children Act 1989).

An adoption order is an order under the Adoption Act 1976 (see Section 12 adoption orders) and children who were adopted under the Adoption and Children Act 2002 (see Section 46 adoption orders).

A 'Child Arrangements Order' is an order settling the arrangements to be made as to the person with whom the child is to live under Section 8 of the Children Act 1989 as amended by Section 14 of the Children and Families Act 2014. Section 14A of the Children Act 1989 defines a 'Special Guardianship Order' as an order appointing one or more individuals to be a child's special guardian (or special guardians).

## Community schools

Community schools are run by the local authority which employs the staff and owns the land and buildings. Islington Council sets the admissions criteria for community schools.

### Compulsory school age

A child reaches compulsory school age on the prescribed day following their fifth birthday. The prescribed days are 31 December, 31 March and 31 August. Children must be in full-time education by this date.

### Cut-off distance

The distance of the last pupil admitted under the 'distance' criterion. Use the following link to find information on cut-off distances for Islington schools [www.islington.gov.uk/cut-offdistance](http://www.islington.gov.uk/cut-offdistance).

For schools with a religious character (e.g., Catholic or Church of England schools) that use 'church' or 'faith' as one of their admission criteria, the 'cut-off distance' **only** applies to applicants considered under the final criterion of '**distance**' alone. It does not apply to other applicants considered under criteria with a higher priority (e.g., religious criteria related to faith or church).

Distances for Islington's community schools will be measured in a straight line (as the crow flies) from the home address to the midpoint of the school grounds, using the local authority's computerised measuring system. Those living closer to the school will receive higher priority.

### Equal Preference Scheme

Each preference is considered independently against the school's published admissions criteria. If the applicant is eligible for admission to more than one school, the highest preference school is offered.

### Family Information Service

[The Family Information Service \(FIS\)](#) gives free, impartial information, advice and guidance about services for children, young people and families in Islington. Find out about childcare, employment, benefits, support for disabled children and more.

### Free schools

Free schools are independently managed, all-ability schools funded by the government. They are run on a not-for-profit basis and can be set up by charities, universities, independent schools, community and faith groups, teachers, parents and businesses. Free schools can change the length of school terms and the school day and don't need to follow the national curriculum.

## **Foundation schools**

Foundation schools are run by their own governing body, which employs the staff and sets the admissions criteria. Land and buildings are usually owned by the governing body or a charitable foundation.

## **Home local authority**

A child's home local authority (local council) is the local authority where they live, i.e. the council you pay your council tax to.

## **PAN (Published Admission Number)**

The number of school places that the admission authority must offer in each relevant age group.

## **Pan-London System (PLR)**

Primary school places in London are co-ordinated through the Pan-London admissions scheme that aims to simplify the primary application process and ensure a fairer distribution of places available across London.

## **Parents and family members**

A parent is any person who has parental responsibility or care of the child. Where admission arrangements refer to parent's attendance at church, it is sufficient for just one parent to attend. Family members include single parents and siblings.

## **Private fostering**

Private fostering is when a child under the age of 16 (under 18 if disabled) is cared for by someone who is not their parent or a 'close relative'. This is a private arrangement made between a parent and a carer, for 28 days or more. Close relatives are defined as step-parents, grandparents, brothers, sisters, uncles or aunts. Private foster carers have a duty to inform their home local authority of such arrangements. This must also be declared on the admissions application form. Please see the back page of this guide for more information.

## **Sibling**

Sibling refers to a brother or sister, half-brother or sister, adopted brother or sister, stepbrother or sister, or the child of the parent or carer's partner, living in the same family at the same address.

## **Education, Health and Care Plan (EHCP)**

The EHCP is a legal document issued by the home local authority detailing the particular needs, resources and provision required to support the child, and can include a named school that is suitable for providing education for that child. EHCPs will continue into further

education and training, and for some young people, to complete a course or qualification, up to the age of 25.

## **Summer-born**

The term summer-born is used to refer to children born from **1 April to 31 August**. These children are not required to start school until a full school year after the point at which they could first have been admitted.

## **Supplementary Information Form (SIF)**

All parents who list their preferred schools on the local authority's online admission application are regarded as having made a valid application. A supplementary information form may also be required for applicants considered under the criteria of faith schools, for boarding school and for selective schools. *Please check the school's fact file for details.*

## **Trust schools**

A Trust school is a type of foundation school which forms a charitable trust with an outside partner. For example, a business or educational charity aiming to raise standards and explore new ways of working.

## **Voluntary-aided schools (VA)**

Voluntary-aided schools are mainly religious or 'faith' schools, although anyone can apply for a place. As with foundation schools, the governing body employs the staff and sets the admissions criteria.

School buildings and land are normally owned by a charitable foundation, often a religious organisation. The governing body contributes to building and maintenance costs.



---

## Key information

Apply online: [London e-Admissions system](#)

Remember: **There is no automatic entry to Reception class from nursery – you must reapply. Apply now!**

Apply on time: Closing date **15 January 2026**

Offer Day: You will receive an email in the evening of **16 April 2026**

Contact the Admissions Team:

**T:** 020 7527 5515

**E:** [admissions@islington.gov.uk](mailto:admissions@islington.gov.uk)

# Do you know someone who is under 16 and not living at home?



“My mother recently had an operation so I’m going to be staying with family friends for the next 3 months”



“Things got really bad at home, I would argue with my parents all the time. Now I live with my friends and her parents”



“I came to the UK on holiday but ended up living with my cousins. I’ve been in the UK for over 5 years now”

If you know a child in this situation or would like more information please call the Islington Children’s Services Contact Team on **020 7527 7400** or email [csctreferrals@islington.gov.uk](mailto:csctreferrals@islington.gov.uk)



**ISLINGTON**

For a more equal future



# Is your child up to date with all their vaccinations?

**Starting school means mixing with lots more children and adults. Being fully vaccinated will protect your child from serious diseases such as measles, mumps and rubella.**

- The good news is that it's never too late to protect your child
- Check your child's red book, or ring your GP practice, to check your child's vaccination status
- Call your GP practice to make an appointment for any missed vaccinations

If you would like to know more about measles, the MMR vaccine or other vaccine-preventable diseases, there is lots of information on the [Vaccine Knowledge Project website](#).